

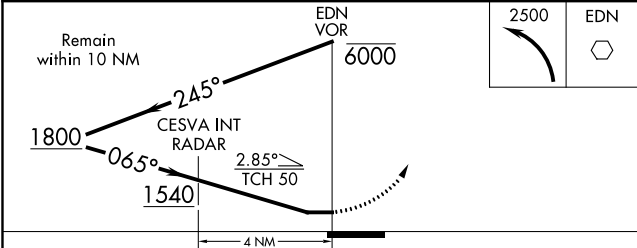
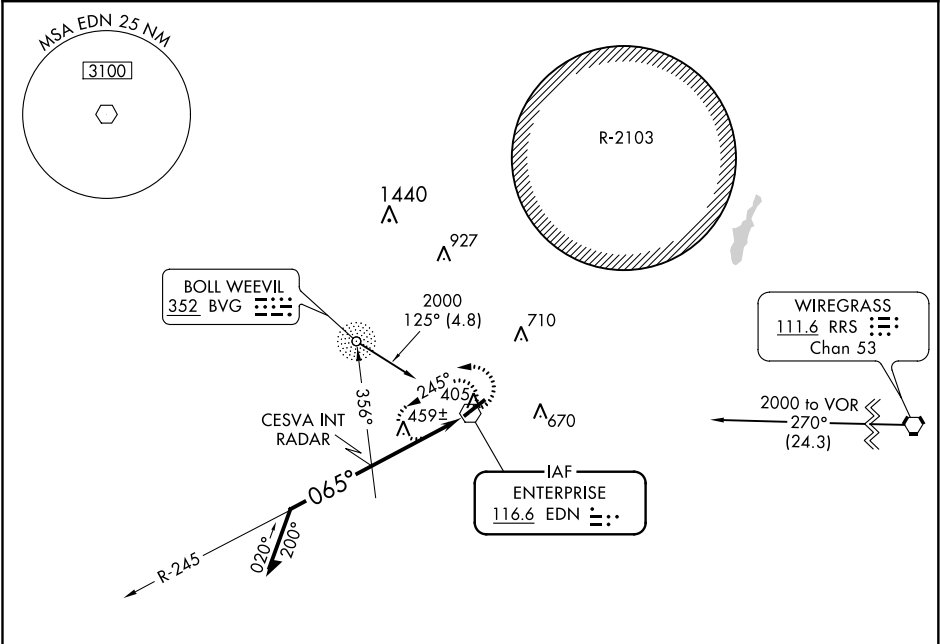
VOR EDN 116.6	APP CRS 065°	Rwy Idg 5080 TDZE 360 Apt Elev 361
-------------------------	------------------------	---

VOR RWY 5
ENTERPRISE MUNI(EDN)

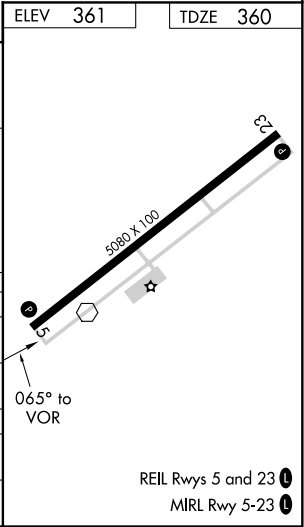
ADF or RADAR Required.
NA Use Cairns AAF (Fort Rucker) alimeter setting.

MISSED APPROACH:
Climbing left turn to 2500
in EDN VOR holding pattern.

AWOS-3PT 118.9	CAIRNS APP CON ★ 133.45 239.275	UNICOM 122.8 (CTAF) 0
--------------------------	---	---------------------------------



CATEGORY	A	B	C	D
S-5	1540-1¼ 1180 (1200-1¼)	1540-1½ 1180 (1200-1½)	1540-3 1180 (1200-3)	NA
CIRCLING	1540-1¼ 1179 (1200-1¼)	1540-1½ 1179 (1200-1½)	1540-3 1179 (1200-3)	NA
CESVA INT/RADAR MINIMUMS				
S-5	820-1	460 (500-1)	820-1¼ 460 (500-1¼)	NA
CIRCLING	860-1	499 (500-1)	860-1½ 499 (500-1½)	NA



SE-4, 31 DEC 2020 to 28 JAN 2021

SE-4, 31 DEC 2020 to 28 JAN 2021