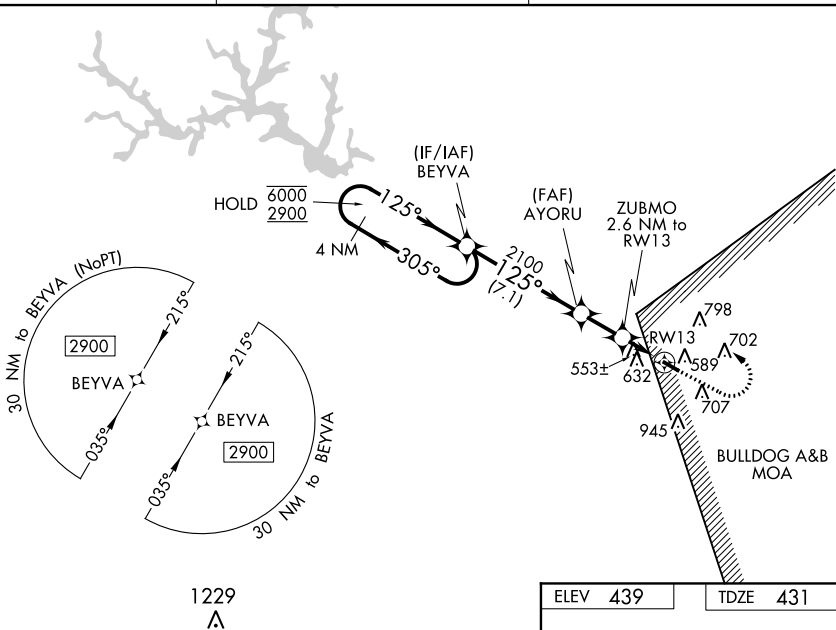


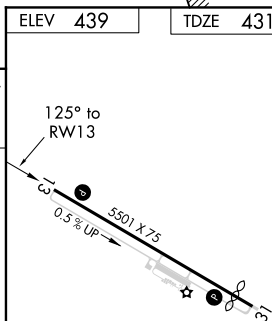
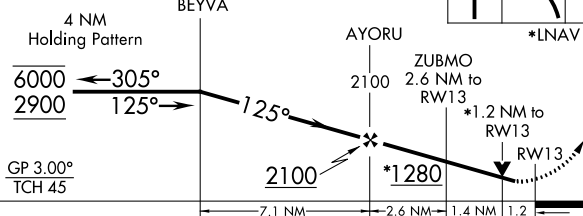
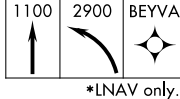
20142


RNAV (GPS) RWY 13  
KAOLIN FIELD (OKZ)

**MISSED APPROACH:** Climb to 1100 then climbing left turn to 2900 direct BEYVA and hold.

UNICOM  
123.0 (CTAF) **L**

VGSI and RNAV glidepath not coincident  
(VGSI Angle 3.00/TCH 38).



CATEGORY		A	B	C	D
LPV	DA	691 <sup>-3/4</sup>	260 (300 <sup>-3/4</sup> )		NA
LNAV/ VNAV	DA	700 <sup>-7/8</sup>	269 (300 <sup>-7/8</sup> )		NA
LNAV	MDA	820-1	389 (400-1)	820 <sup>-11/8</sup> 389 (400-1 <sup>1/8</sup> )	NA
 CIRCLING		1000-1 561 (600-1)	1120-1 681 (700-1)	1240-2 <sup>1/4</sup> 801 (900-2 <sup>1/4</sup> )	NA

REIL Rwy 13 **L**  
MIRL Rwy 13-31 **L**

KAOLIN FIELD (OKZ)  
RNAV (GPS) RWY 13