

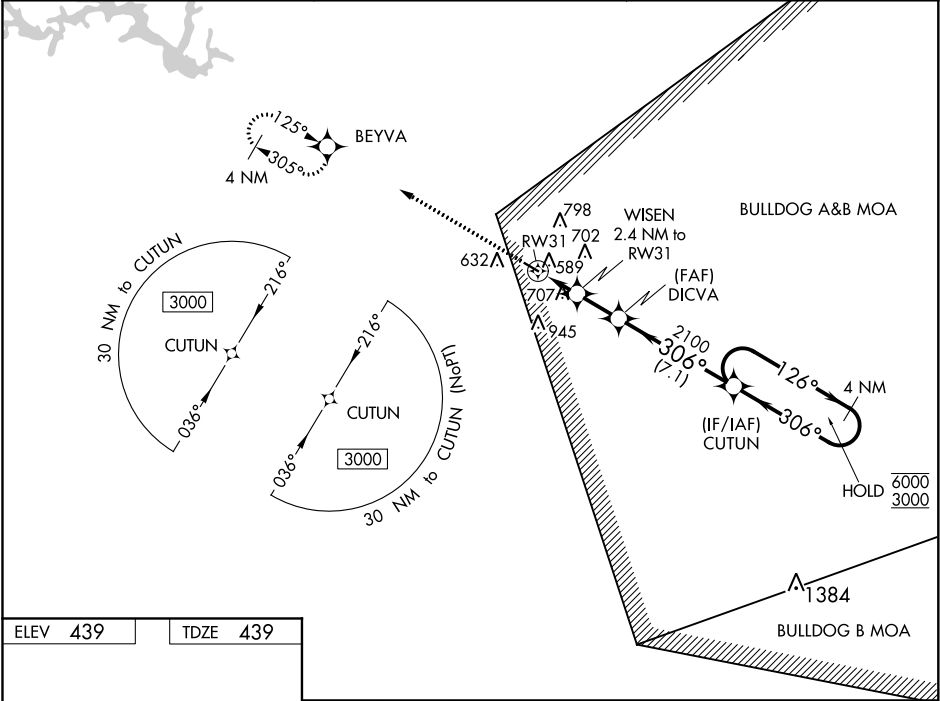
WAAS CH 72721 W31A	APP CRS 306°	Rwy Idg TDZE 439 Apt Elev 439	5015
--	------------------------	---	-------------

RNAV (GPS) RWY 31

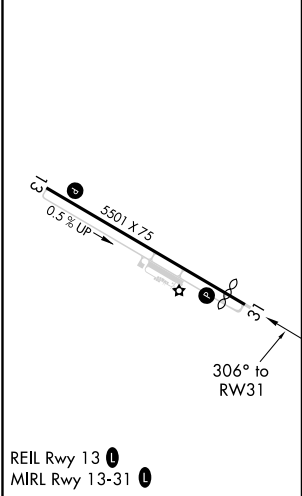
KAOLIN FIELD (OKZ)

RNP APCH. ▼ Rwy 31 helicopter visibility reduction below ¾ SM NA. ▲ For uncompensated Baro-VNAV systems, LNAV/VNAV NA below -15°C or above 54°C.	MISSED APPROACH: Climb to 2900 direct BEYVA and hold.
--	---

AWOS-3 120.575	ATLANTA APP CON ★ 124.2 279.6	UNICOM 123.0 (CTAF) 0
--------------------------	---	---------------------------------



ELEV 439	TDZE 439
-----------------	-----------------



2900	BEYVA	VGSI and RNAV glidepath not coincident (VGSI Angle 3.60/TCH 41).			
*LNAV only.		WISEN 2.4 NM to RW31	DICVA 2100	CUTUN 4 NM Holding Pattern	
		1.3 NM to RW31	1260	306°	126° → 6000 ← 306° 3000
		1.3 NM	1.2	2.6 NM	7.1 NM
CATEGORY	A	B	C	D	
LPV DA	738-7/8	299 (300-7/8)		NA	
LNAV/VNAV DA	848-1 1/8	409 (500-1 1/8)		NA	
LNAV MDA	960-1	521 (600-1)	960-1 1/2 521 (600-1 1/2)	NA	
CIRCLING	1000-1 561 (600-1)	1120-1 681 (700-1)	1240-2 1/4 801 (900-2 1/4)	NA	

SE-4, 31 DEC 2020 to 28 JAN 2021

SE-4, 31 DEC 2020 to 28 JAN 2021