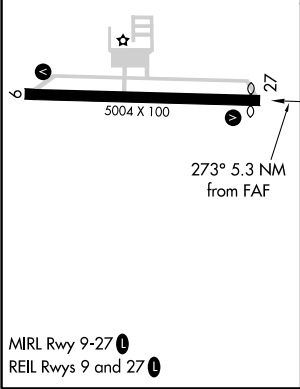
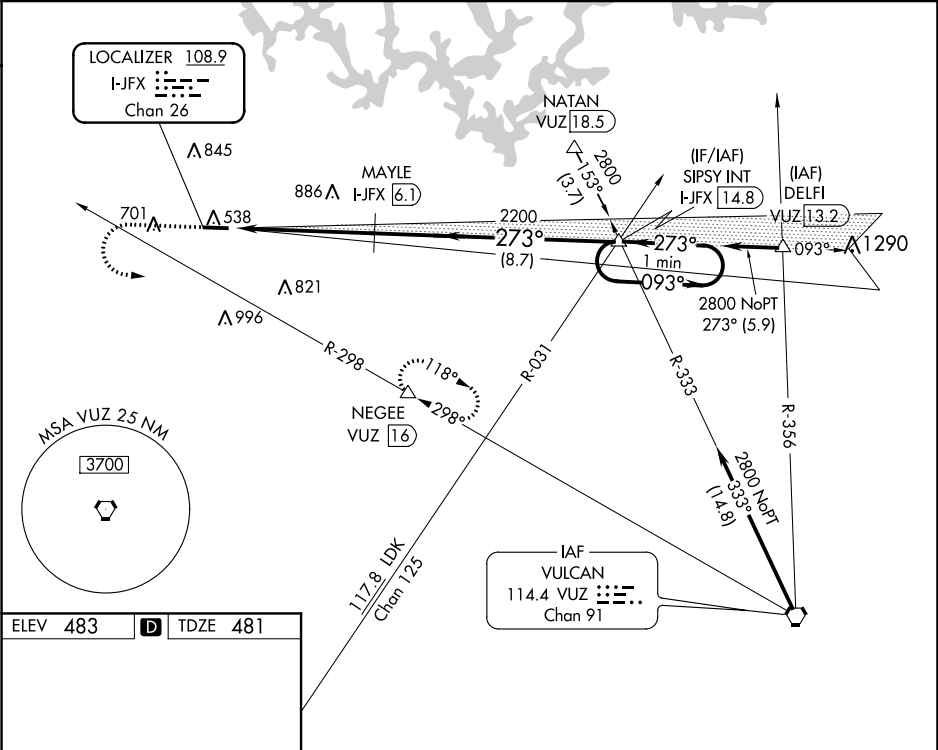


LOC/DME I-JFX	APP CRS	Rwy Idg	4800
108.9	273°	TDZE	481
Chan 26		Apt Elev	483

ILS or LOC/DME RWY 27
WALKER COUNTY-BEVILL FIELD (JFX)

<p>▼ NA</p> <p>Helicopter visibility reduction below 3/4 SM NA. VDP NA with Birmingham altimeter setting. When local altimeter setting not received, use Birmingham altimeter setting and increase ILS DA 104 feet, and increase all MDA 120 feet; increase S-ILS all Cats, S-LOC Cat C/D and Circling Cat C visibility 3/8 mile and Circling Cat D visibility 1/4 mile. DME Required.</p>	<p>MISSED APPROACH: Climb to 1500 then climbing left turn to 3000 on VUZ VORTAC R-298 to NEGEE/16 DME and hold.</p>
--	---

AWOS-3PT 119.225	BIRMINGHAM APP CON 127.675 338.2	UNICOM 122.7 (CTAF) 0
---------------------	-------------------------------------	--------------------------



1500	3000	VUZ R-298	NEGEE	MAYLE I-JFX 6.1	SPSY INT I-JFX 14.8	One Minute Holding Pattern
*LOC only						
* I-JFX 2.5						
I-JFX 0.8						
2200						
1.6 NM						
3.7 NM						
8.7 NM						
273°						
093°						
2800						
GS 3.00° TCH 44						
CATEGORY	A	B	C	D		
S-ILS 27	788-1				307 (300-1)	
S-LOC 27	1040-1 559 (600-1)		1040-1 5/8 559 (600-1 5/8)			
CIRCLING	1040-1 557 (600-1)		1040-1 5/8 557 (600-1 5/8)		1080-2 597 (600-2)	