

APP CRS
255°

Rwy Idg
4903

TDZE
307

Apt Elev
308

RNAV (GPS) RWY 26

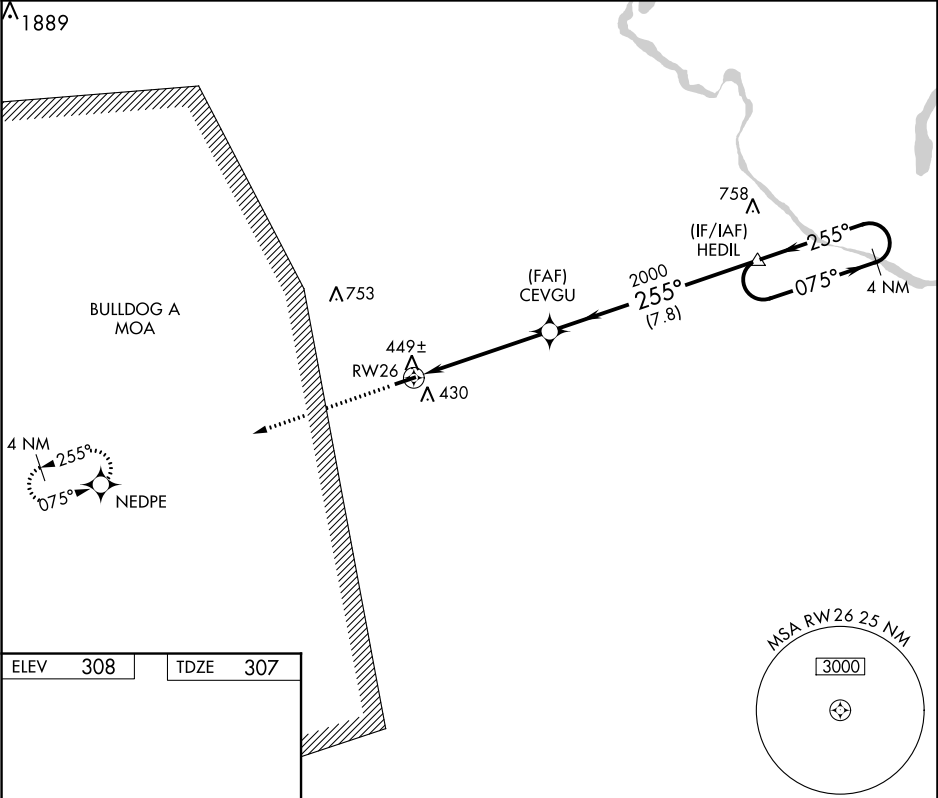
BURKE COUNTY (BXX)

RNP APCH

Use Augusta Rgnl at Bush Field altimeter setting.
Procedure NA at night.
Rwy 26 helicopter visibility reduction below 1 SM NA.

MISSED APPROACH: Climb to 2000 direct NEDPE and hold.

AGS ASOS 132.75	AUGUSTA APP CON★ 126.8 270.3	CTAF 122.9
---------------------------	--	----------------------



ELEV 308

TDZE 307

2000

NEDPE

CEVGU

HEDIL

4 NM Holding Pattern

255° to RW26

0.4% UP

5003 X 75

255°

075°

2000

3.04° TCH 40

5.1 NM

7.8 NM

CATEGORY	A	B	C	D
LNAV MDA	800-1 493 (500-1)	800-1 493 (500-1 3/8)	860-1 552 (600-1 1/2)	NA
CIRCLING	860-1 552 (600-1)	860-1 552 (600-1 1/2)	860-1 552 (600-1 1/2)	NA