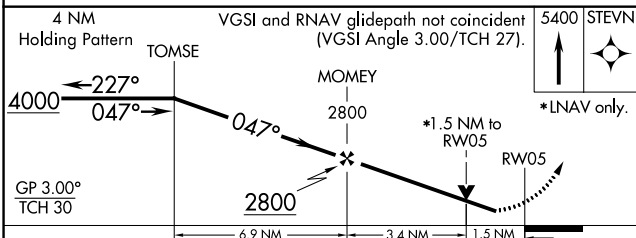
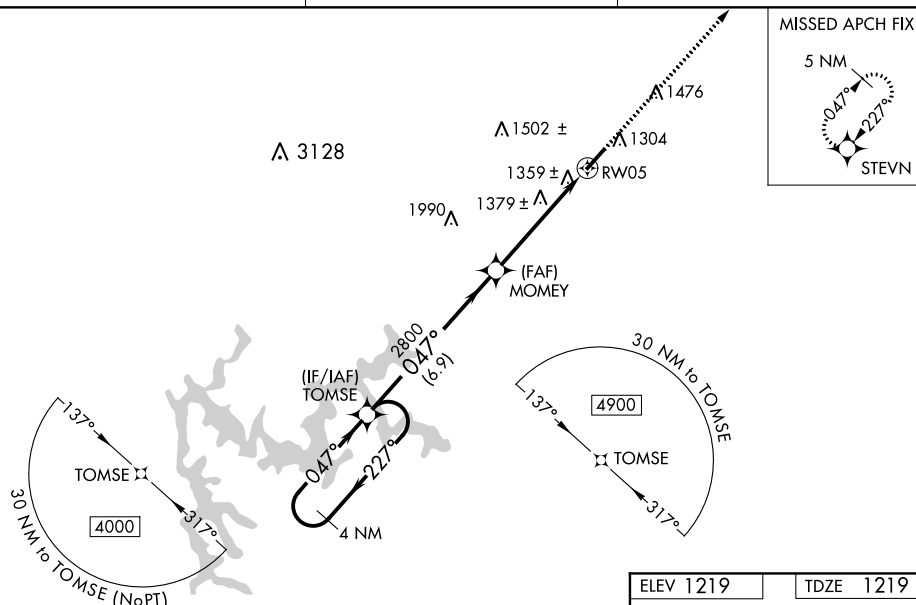


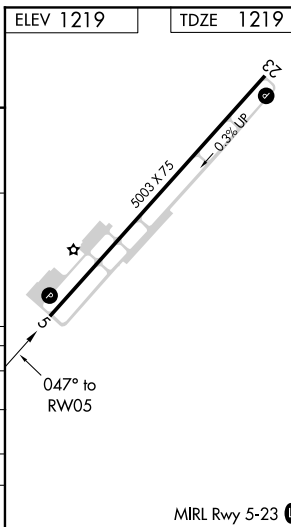
RNAV (GPS) RWY 5
CHEROKEE COUNTY RGNL (CNI)

MISSED APPROACH: Climb to 5400 direct STEVN and hold, continue climb-in-hold to 5400.

UNICOM
123.0 (CTAF) **L**



CATEGORY	A	B	C	D
LPV DA	1469-7/8		250 (300-7/8)	
LNAV/VNAV DA	1554-1 1/8		335 (400-1 1/8)	
LNAV MDA	1640-1	421 (500-1)	1640-1 1/4	421 (500-1 1/4)
CIRCLING	1720-1	501 (600-1)	1720-1 1/2 501 (600-1 1/2)	1780-2 561 (600-2)



SE-4, 31 DEC 2020 to 28 JAN 2021

SE-4, 31 DEC 2020 to 28 JAN 2021