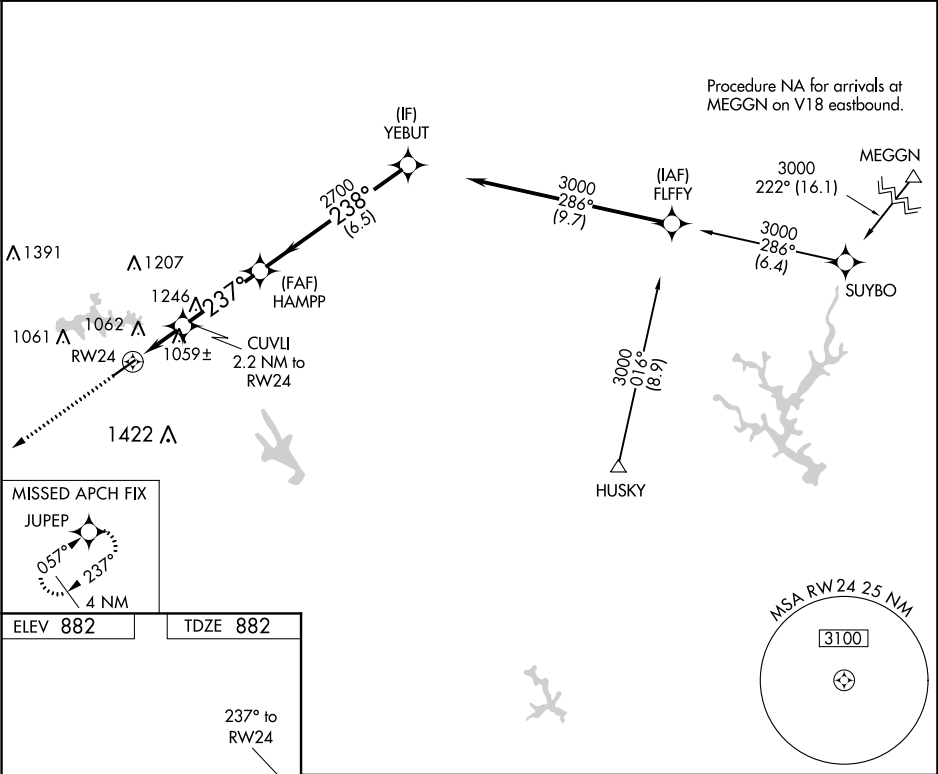


APP CRS	Rwy Idg	5010
237°	TDZE	882
	Apt Elev	882

RNAV (GPS) RWY 24
ATLANTA SPEEDWAY (HMP)

RNP APCH.	<p>▼ ▲NA</p> <p>Rwy 24 helicopter visibility reduction below ¾ SM NA. VDP NA when using Hartsfield-Jackson Atlanta Intl altimeter setting. When local altimeter setting not received, use Hartsfield-Jackson Atlanta Intl altimeter setting and increase all MDA 60 feet; increase LNAV Cats C/D visibility ½ mile and Circling Cat D visibility ¼ mile. Circling Rwy 6 NA at night.</p>	MISSED APPROACH: Climb to 3000 direct JUPEP and hold.
-----------	--	--

AWOS-3 124.825	ATLANTA APP CON 128.575 343.675	CLNC DEL 128.575 343.675	UNICOM 122.725 (CTAF) 1
-------------------	------------------------------------	-----------------------------	----------------------------



ELEV 882		TDZE 882	
MIRL Rwy 6-24 1		3000 JUPEP	
237° to RW24		CUVLI 2.2 NM to RW24	
500 X 75		HAMPP	
0.5% UP		YEBUT 3000	
1.3 NM to RW24		238°	
1.3 NM 0.9 NM		2700	
3.4 NM		1620	
6.5 NM		3.00° TCH 44	
CATEGORY	A	B	C
LNAV MDA	1320-1 438 (500-1)	1320-1¼ 438 (500-1¼)	
CIRCLING	1380-1 498 (500-1)	1700-2½ 818 (900-2½)	1740-2¾ 858 (900-2¾)

SE-4, 31 DEC 2020 to 28 JAN 2021

SE-4, 31 DEC 2020 to 28 JAN 2021