

LOC/DME I-OPN	APP CRS	Rwy Idg	5651
109.75	301°	TDZE	796
Chan 34 (Y)		Apt Elev	798

ILS or LOC RWY 30

THOMASTON-UPSON COUNTY (OPN)

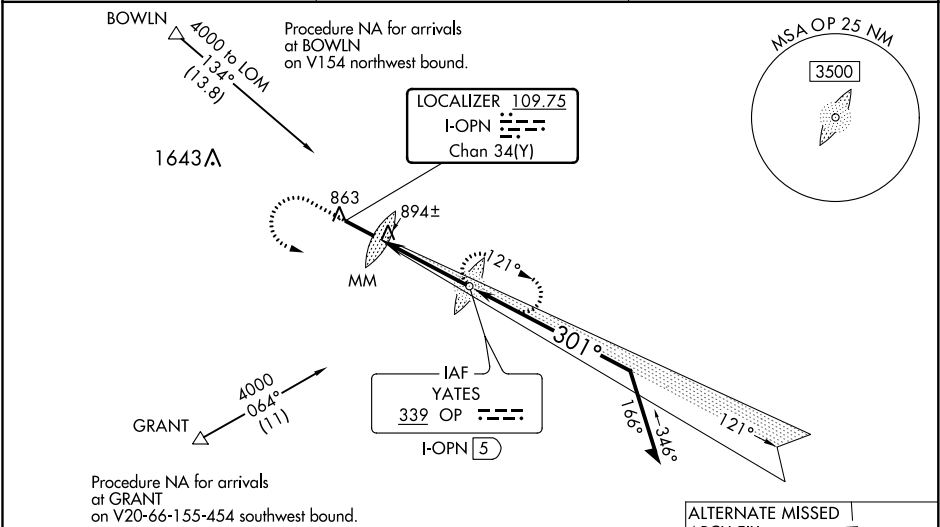
ADF required.

When local altimeter setting not received, use Atlanta Rgnl Falcon Field altimeter setting: increase DA to 1064 feet; increase all MDAs 80 feet and S-LOC 30 visibility Cats C and D ¼ SM. For inop ALS, increase S-LOC 30 Cat C/D visibility to 1 SM. For inop ALS when using Atlanta Rgnl Falcon Field altimeter setting, increase S-ILS 30 all Cats visibility to ¾ SM. VDP NA when using Atlanta Rgnl Falcon Field altimeter setting.

MALSR

MISSED APPROACH: Climb to 1500 then climbing left turn to 3000 direct YATES LOM and hold, continue climb-in-hold to 3000.

AWOS-3 133.975	ATLANTA APP CON ★ 124.2 279.6	UNICOM 122.8 (CTAF) 0
-------------------	----------------------------------	--------------------------



ELEV 798

TDZE 796

MIRL Rwy 12-30 0

FAF to MAP 4 NM

301° 4 NM from FAF

1500 3000 OP

LOM I-OPN [5]

2141 2400 2200

GS 3.00° TCH 51

VGSI and ILS glidepath not coincident (VGSI Angle 3.00/TCH 27).

CATEGORY	A	B	C	D
S-ILS 30	996-1/2 200 (200-1/2)			
S-LOC 30	1160-1/2	364 (400-1/2)	1160-3/8 364 (400-3/8)	1160-3/4 364 (400-3/4)
CIRCLING	1300-1	502 (600-1)	1300-1/2 502 (600-1/2)	1360-2 562 (600-2)