

WAAS CH <b>87114</b> <b>W28A</b>	APP CRS <b>276°</b>	Rwy Idg <b>5251</b> TDZE <b>110</b> Apt Elev <b>112</b>
--	------------------------	---

RNAV (GPS) RWY 28  
CLAXTON-EVANS COUNTY (CWX)

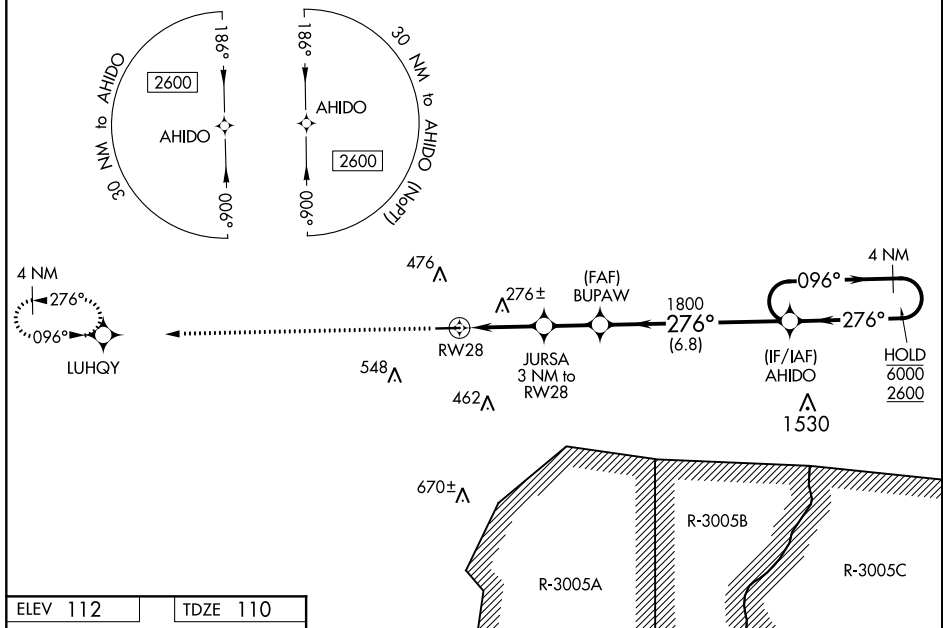
RNP APCH.

**⚠** Rwy 28 helicopter visibility reduction below  $\frac{3}{4}$  SM NA.  
For uncompensated Baro-VNAV systems, LNAV/VNAV NA  
below -15°C or above 54°C.

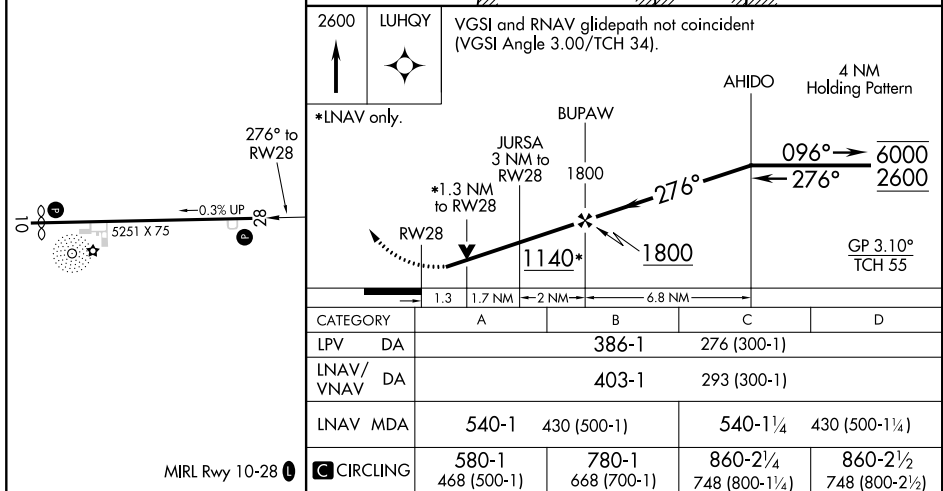
**MISSED APPROACH:** Climb to 2600 direct LUHQY and hold.

AWOS-3  
120,075

JACKSONVILLE CENTER  
132.925 363.2

UNICOM  
122.8 (CTAF) 

ELEV 112		TDZE 110
----------	--	----------



CLAXTON, GEORGIA

Amdt 1 30JAN20

32°12'N-81°52'W

CLAXTON-EVANS COUNTY (C'WV)  
RNAV (GPS) RWY 28

SE-4, 31 DEC 2020 to 28 JAN 2021