

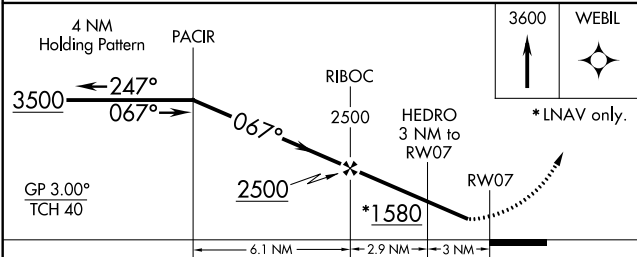
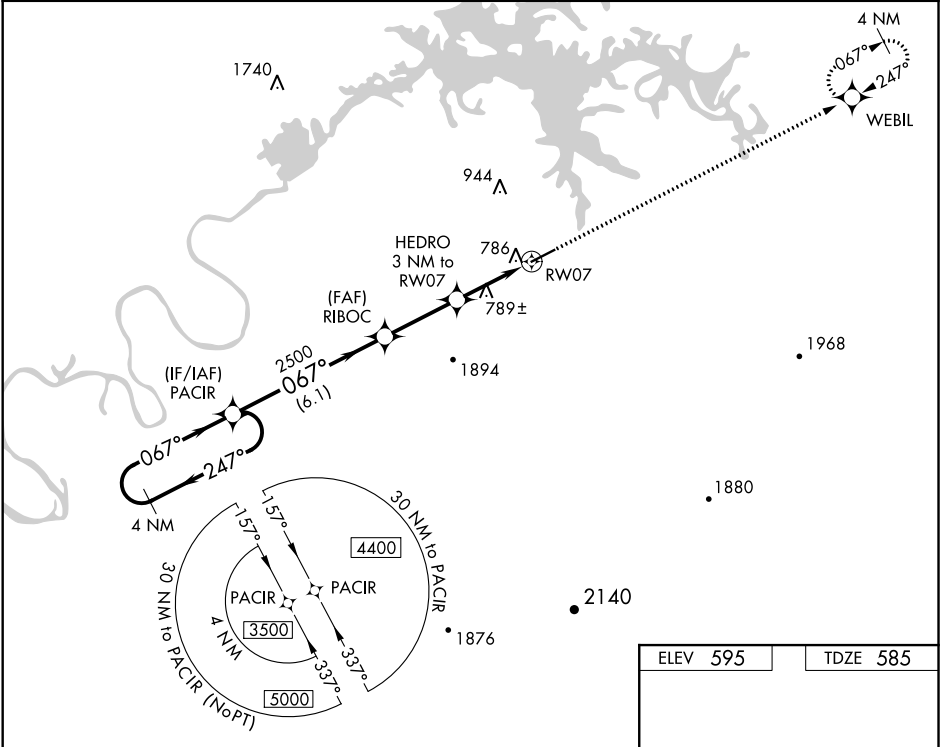
WAAS CH 48927 W07A	APP CRS 067°	Rwy Idg 5500 TDZE 585 Apt Elev 595
--	------------------------	---

RNAV (GPS) RWY 7

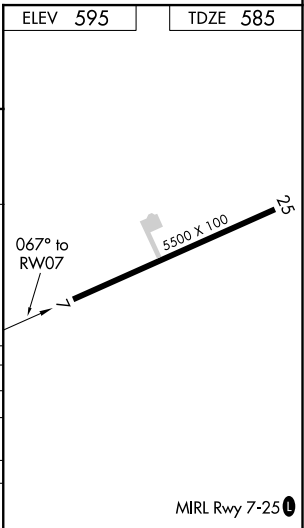
CENTRE-PIEDMONT CHEROKEE COUNTY RGNL (PYP)

<div><div>▼</div><div>NA</div></div> <div>Baro-VNAV NA. DME/DME RNP-0.3 NA. Helicopter visibility reduction below ¾ SM NA. Use Gadsden altimeter setting; when not received use Anniston altimeter setting and increase all DA/MDA 20 feet; increase LPV all Cats and LNAV Cats C/D visibility ½ mile.</div>	MISSED APPROACH: Climb to 3600 direct WEBIL and hold.
--	--

GAD AWOS-3PT 127.825	ATLANTA CENTER 124.5 270.325	CTAF 122.90
--------------------------------	--	-----------------------



CATEGORY	A	B	C	D
LPV DA	896-1	311 (400-1)		
LNAV/VNAV DA	1009-1½	424 (500-1½)		
LNAV MDA	1100-1 515 (600-1)	1100-1⅜ 515 (600-1⅜)		
CIRCLING	1160-1 565 (600-1)	1160-1½ 565 (600-1½)	1160-2 565 (600-2)	



SE-4, 31 DEC 2020 to 28 JAN 2021

SE-4, 31 DEC 2020 to 28 JAN 2021