

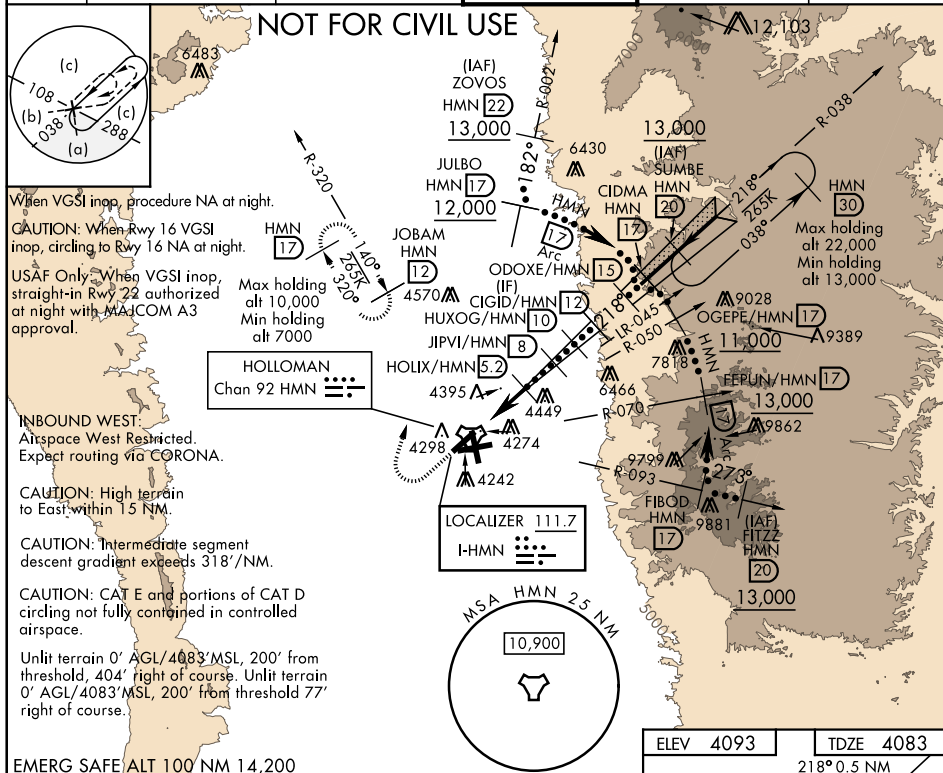
HI-ILS or LOC RWY 22

LOC I-HMN 111.7	APCH CRS 218°	Rwy ldg 10,578 TDZE 4083 Arpt Elev 4093
---------------------------	-------------------------	---

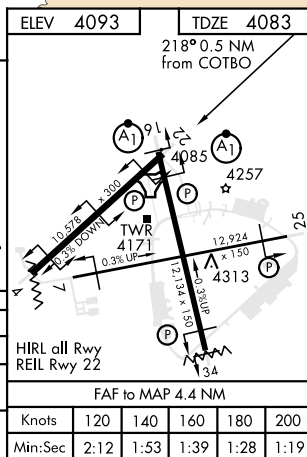
JAL-7 [USAF]

HOLLOMAN AFB (KHMN)

▼ *When ALS inop, increase vis to 1¾.			ALSF-1 	MISSED APPROACH: Climb straight ahead to 7000, passing 5000 turn right and intercept HMN R-320 outbound to JOBAM and hold.	
ATIS ★ 273.5	ALBUQUERQUE CENTER 132.6 257.6	HOLLOMAN APP CON 120.6 269.225	HOLLOMAN TOWER ★ 119.3 255.9	GND CON 127.05 275.8	CLNC DEL 126.7 289.4



↑ 5000 ↑ 7000 ↑ HMN R-320 ↑ JOBAM		VGS and ILS glidepath not coincident (VGS Angle 3.00/TCH 53).		CIDMA 17
TACAN 8	COTBO 8	HOLIX 5.2	JIPVI 8	HUXOG 12
5 NM	4.4 NM	5700	7100	7900
8400	9800	10,500	GS 3.00°	TCH 51
CATEGORY	C	D	E	
S-ILS 22	4333-1	250	(300-1)	
S-LOC 22 *	4680-1¼	597	(600-1¼)	
CIRCLING	4740-1¼ 647 (700-1¼)	4760-2 667 (700-2)	4760-2¼ 667 (700-2¼)	



HI-ILS or LOC RWY 22