

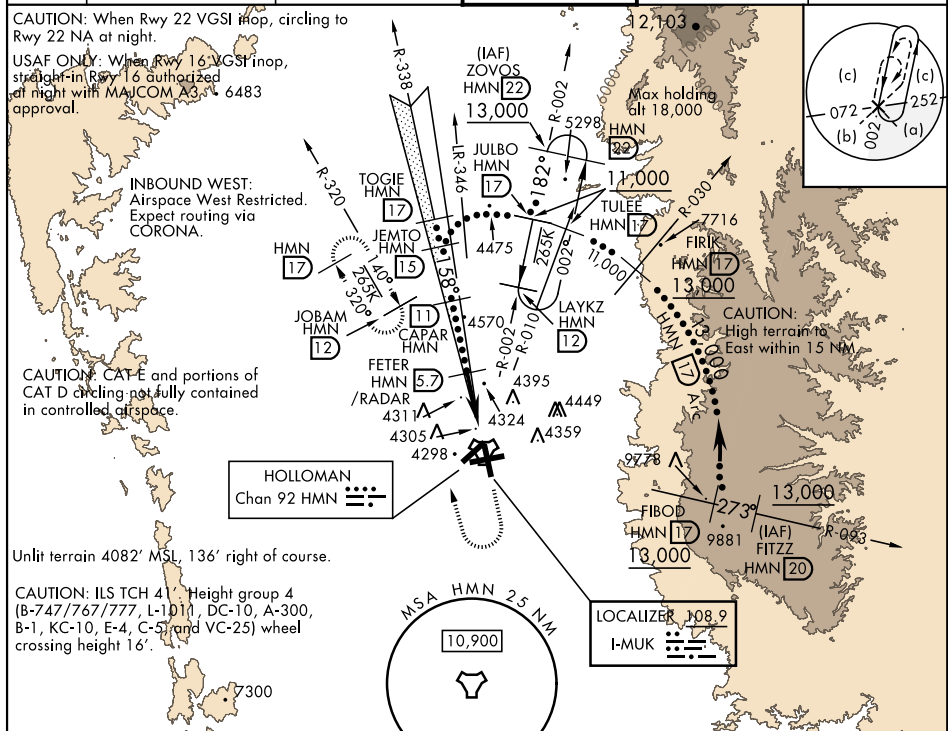
HI-ILS or LOC Z RWY 16

LOC I-MUK 108.9	APCH CRS 158°	Rwy Idg 12,134 TDZE 4083 Arpt Elev 4093	JAL-7 [USAF]	HOLLOMAN AFB (KHMN)
---------------------------	-------------------------	--	--------------	---------------------

* When ALS inop, increase CAT CDE vis to 1 1/2 miles.

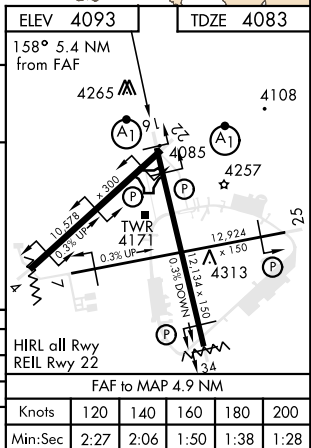
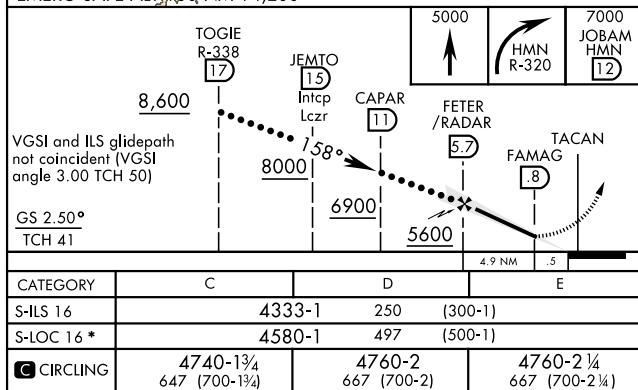
ALS-F-1 MISSED APPROACH: Climb straight ahead to 7000, passing 5000 turn right and intercept HMN R-320 outbound to JOBAM and hold.

ATIS ★ 273.5	ALBUQUERQUE CENTER 132.65 257.6	HOLLOMAN APP CON 120.6 269.225	HOLLOMAN TOWER ★ 119.3 255.9	GND CON 127.05 275.8	CLNC DEL 126.7 289.4
------------------------	---	--	--	--------------------------------	--------------------------------



RADAR or DME REQUIRED

EMERG SAFE ALT 100 NM 14,200



HI-ILS or LOC Z RWY 16