

ALAMOGORDO, NEW MEXICO

RNAV (GPS) RWY 16

APCH CRS	Rwy Idg	12,134
158°	TDZE	4083
	Arpt Elev	4093

AL-7 (USAF)

HOLLOMAN AFB (KHMN)

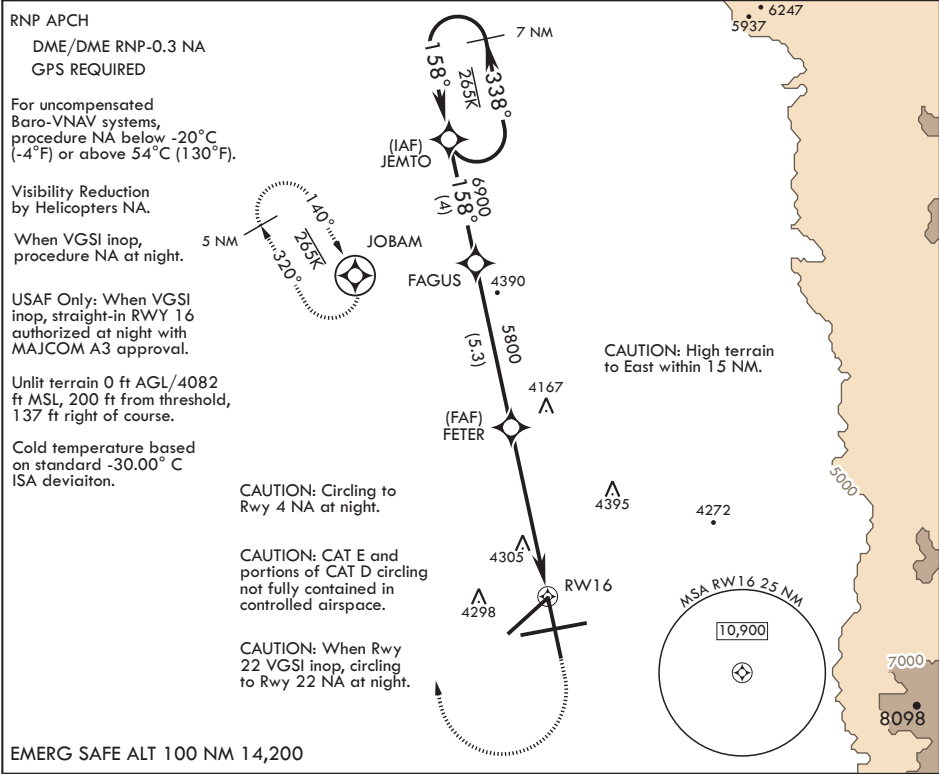
⚠ * When ALS inop, increase CAT ABCDE vis to 1 7/8 miles.
** When ALS inop, increase CAT CDE vis to 1 3/8 miles.

ALSF-1



MISSED APPROACH: Climb straight ahead to 7000, passing 5000 turn direct JOBAM, do not exceed 265 KIAS until turn completion and hold.

ATIS★	ALBUQUERQUE CENTER	APP CON	TOWER★	GND CON	CLNC DEL
273.5	132.65 257.6	120.6 269.225	119.3 255.9	127.05 275.8	126.7 289.4



EMERG SAFE ALT 100 NM 14,200

JEMTO 8000 **FAGUS** 6900 **FETER** 5800 **RWY 16**

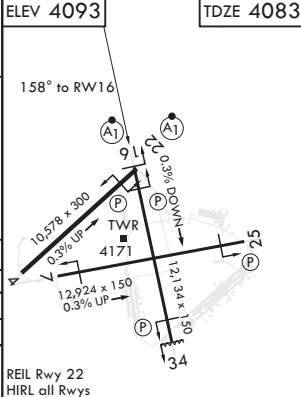
GP 2.88° TCH 51

5.5 NM

5000 **7000** **JOBAM**

ELEV 4093 TDZE 4083

158° to RWY 16



CATEGORY	A	B	C	D	E
LNAV/VNAV DA*	4608-1 7/8		525	(600-1 3/8)	
LNAV MDA**	4600-1		517	(600-1)	
C CIRCLING	4740-1 647 (700-1)		4740-1 3/4 647 (700-1 3/4)	4760-2 667 (700-2)	4760-2 1/4 667 (700-2 1/4)

ALAMOGORDO, NEW MEXICO

32°51'N - 106°07'W

HOLLOMAN AFB (KHMN)

Orig 08NOV18

RNAV (GPS) RWY 16

SW-1, 31 DEC 2020 to 28 JAN 2021

SW-1, 31 DEC 2020 to 28 JAN 2021