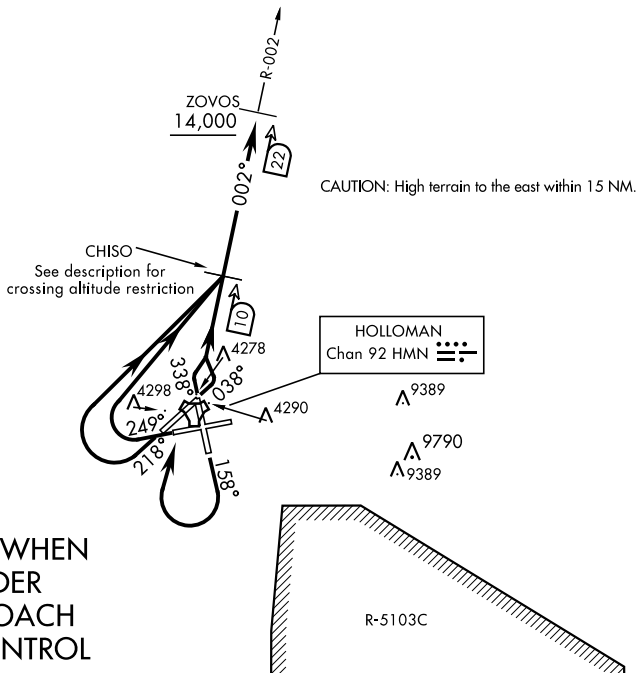


ATIS ★ 273.5
CLNC DEL
126.7 289.4
GND CON
127.05 275.8
HOLLOMAN TOWER ★
119.3 255.9
HOLLOMAN DEP CON
128.1 284.0
ALBUQUERQUE CENTER
132.65 257.6

Rwy	Knots	60	120	180	240	300	360
4	V/V(fpm)	457	914	1371	1828	2285	2742
16	V/V(fpm)	435	870	1305	1740	2175	2610
22	V/V(fpm)	435	870	1305	1740	2175	2610
25	V/V(fpm)	421	842	1263	1684	2105	2526
34	V/V(fpm)	458	916	1374	1832	2290	2748

Minimum climb to 14,100



RADAR REQUIRED WHEN
R-5103C NOT UNDER
HOLLOMAN APPROACH
OR CHEROKEE CONTROL

- DEPARTURE ROUTE DESCRIPTION
- TAKE-OFF RWY 4:** Climb on track 038° until HMN TACAN 1.4 DME. Turn left to intercept HMN R-002 to CHISO and cross at or above 7700. Continue outbound to ZOVOS and cross at or above 14,000.
- TAKE-OFF RWY 16:** Track 158° until HMN TACAN 2.9 DME. Turn right to intercept HMN R-002 to CHISO and cross at 7900. Continue outbound to ZOVOS and cross at or above 14,000.
- TAKE-OFF RWY 22:** Climb on track 218° until HMN TACAN 2.6 DME. Turn right to intercept HMN R-002 to CHISO. Cross at or above 7900. Continue outbound to ZOVOS and cross at or above 14,000.
- TAKE-OFF RWY 25:** Climb on track 249° until HMN TACAN 2.6 DME. Turn right to intercept HMN R-002 to CHISO. Cross CHISO at or above 8100. Continue outbound to ZOVOS and cross at or above 14,000.
- TAKE-OFF RWY 34:** Climb on track 338° until HMN TACAN 1.4 DME. Turn right to intercept HMN R-002 to CHISO. Cross CHISO at or above 7700. Continue outbound to ZOVOS and cross at or above 14,000.