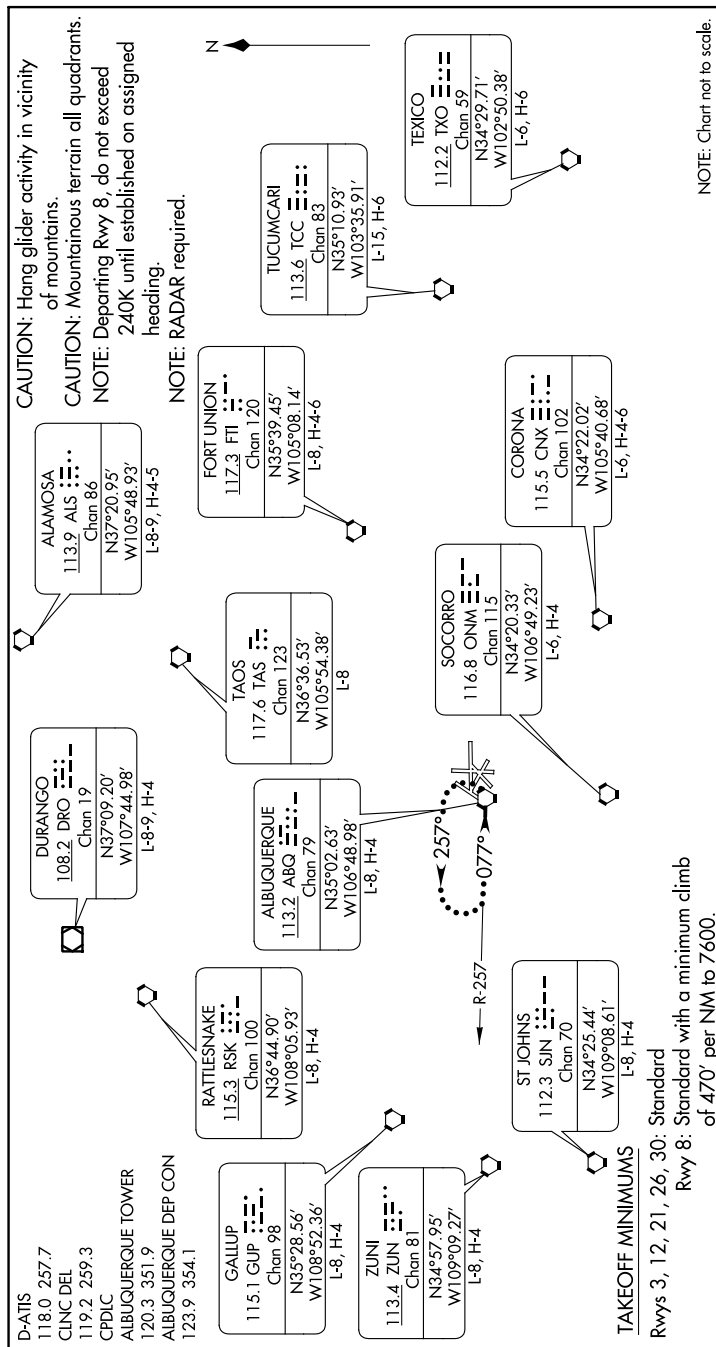


SW-1, 31 DEC 2020 to 28 JAN 2021

(ABQ3.ABQ) 17285

ALBUQUERQUE THREE DEPARTURE

ALBUQUERQUE INTL SUNPORT (ABQ)
ALBUQUERQUE, NEW MEXICO



DEPARTURE ROUTE DESCRIPTION

All aircraft climb on assigned heading for RADAR vectors to filed/assigned route. Expect clearance to filed altitude/flight level 5 minutes after departure.

LOST COMMUNICATIONS: If no transmissions are received for 1 minute after departure and a climb to 14000 feet or higher has not been issued, proceed direct ABQ VORTAC, climb in holding pattern to 14000, then proceed via assigned fix/route. If cleared above 14000 feet, climb on assigned heading to 14000 feet, then proceed via assigned route.

ALBUQUERQUE THREE DEPARTURE

(ABQ3.ABQ) 120CT17

ALBUQUERQUE, NEW MEXICO
ALBUQUERQUE INTL SUNPORT (ABQ)

SW-1, 31 DEC 2020 to 28 JAN 2021