

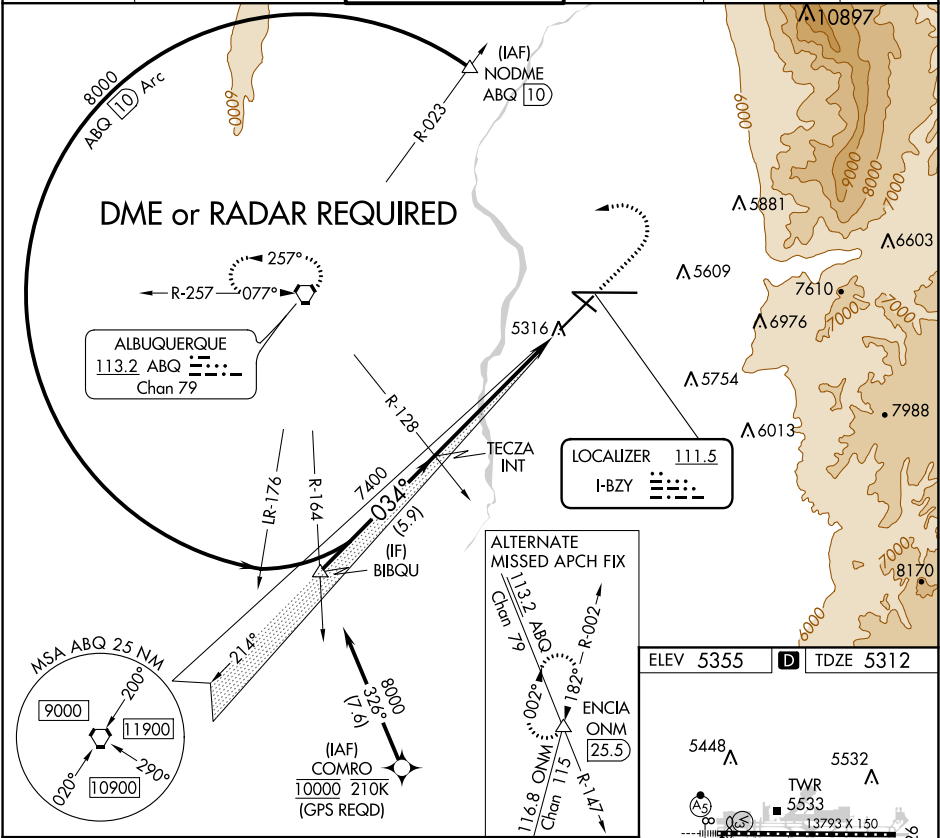


LOC I-BZY	APP CRS	Rwy Idg	10000
111.5	034°	TDZE	5312
		Apt Elev	5355

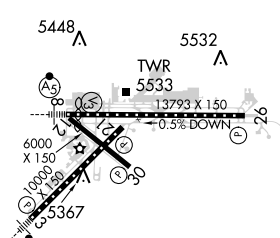
ILS or LOC RWY 3
ALBUQUERQUE INTL SUNPORT (ABQ)

 ASR	 MALSR	MISSED APPROACH: Climb to 5900 then climbing left turn to 8000 direct ABQ VORTAC and hold.
--	--	--

D-ATIS 118.0 257.7	ALBUQUERQUE APP CON 123.9 354.1	ALBUQUERQUE TOWER 120.3 351.9	GND CON 121.9 348.6	CLNC DEL 119.2 259.3	CPDLC
-----------------------	------------------------------------	----------------------------------	------------------------	-------------------------	-------



	BIBQU	TECZA INT	5900	8000	ABQ
	8000	7400			
	GS 3.00°	034°			
	TCH 60	7400			
	5.9 NM	6.4 NM			
CATEGORY	A	B	C	D	
S-ILS 3		5512/18	200 (200-½)		
S-LOC 3		5600/24	288 (300-½)		
CIRCLING	5840-1 485 (500-1)	5920-1 565 (600-1)	5940-1½ 585 (600-½)	6460-3 1105 (1200-3)	

ELEV 5355	TDZE 5312
	
MIRL Rwy 12-30 TDZ/CL Rwy 3 and 8 HIRL Rwy 3-21 and 8-26 REIL Rwy 21, 26, and 30	
FAF to MAP 6.4 NM	
Knots	60 90 120 150 180
Min:Sec	6:24 4:16 3:12 2:34 2:08

SW-1, 31 DEC 2020 to 28 JAN 2021

SW-1, 31 DEC 2020 to 28 JAN 2021