

APP CRS
079°

Rwy Idg
12793

TDZE
5320

Apt Elev
5355

RNAV (RNP) Z RWY 8

ALBUQUERQUE INTL SUNPORT (ABQ)

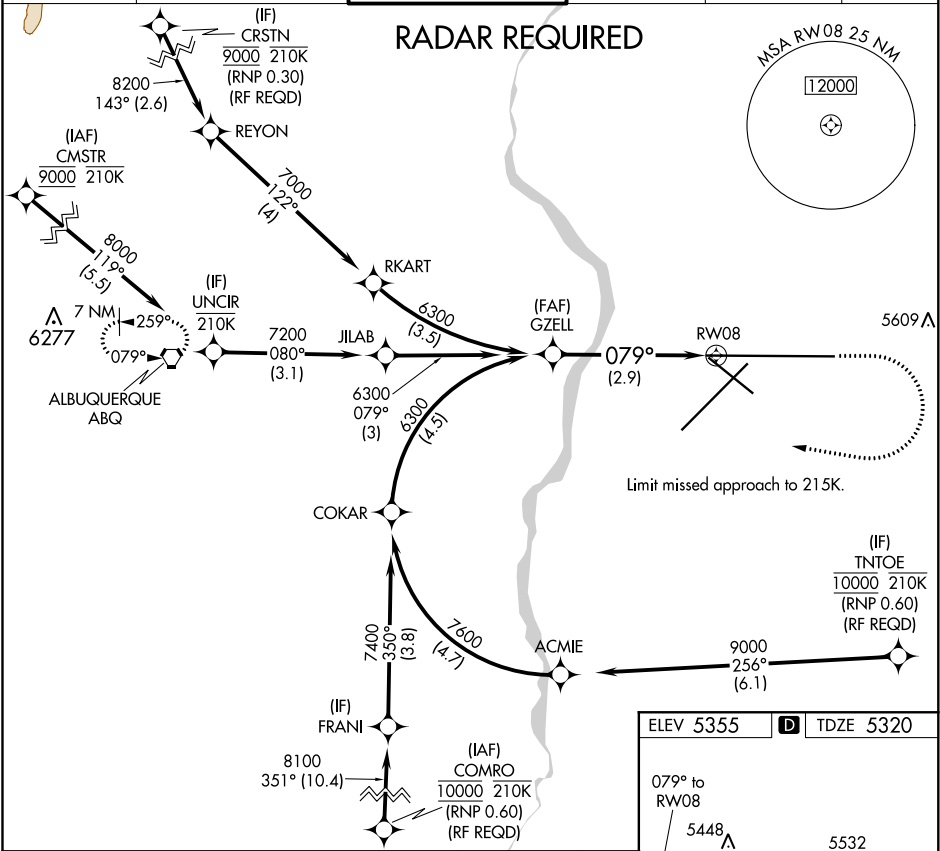
ASR

For uncompensated Baro-VNAV systems, procedure NA below -12°C (11°F) or above 47°C (117°F). For inop MALSR, increase RNP 0.30 all Cnts visibility to RVR 4700. GPS required.

MALSR

MISSED APPROACH: Climb to 5900 then climbing right turn to 8000 direct ABQ VORTAC and hold.

D-ATIS 118.0 257.7	ALBUQUERQUE APP CON 123.9 354.1	ALBUQUERQUE TOWER 120.3 351.9	GND CON 121.9 348.6	CLNC DEL 119.2 259.3	CPDLC
------------------------------	---	---	-------------------------------	--------------------------------	-------



ELEV 5355

TDZE 5320

GP 3.00°

TCH 54

6300

079°

RW08

See planview for multiple IF locations.

2.9 NM

CATEGORY	A	B	C	D
RNP 0.30 DA	5619/24	299 (300-1/2)		

AUTHORIZATION REQUIRED

MIRL Rwy 12-30

TDZ/CL Rwy 3 and 8

HIRL Rwy 3-21 and 8-26

REIL Rwy 21, 26, and 30