

WAAS CH 90410 W02A	APP CRS 023°	Rwy Idg TDZE 7539 Apt Elev 7539
----------------------------------------	------------------------	-----------------------------------------------------

RNAV (GPS) RWY 2

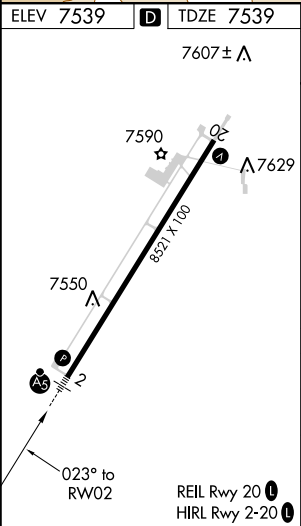
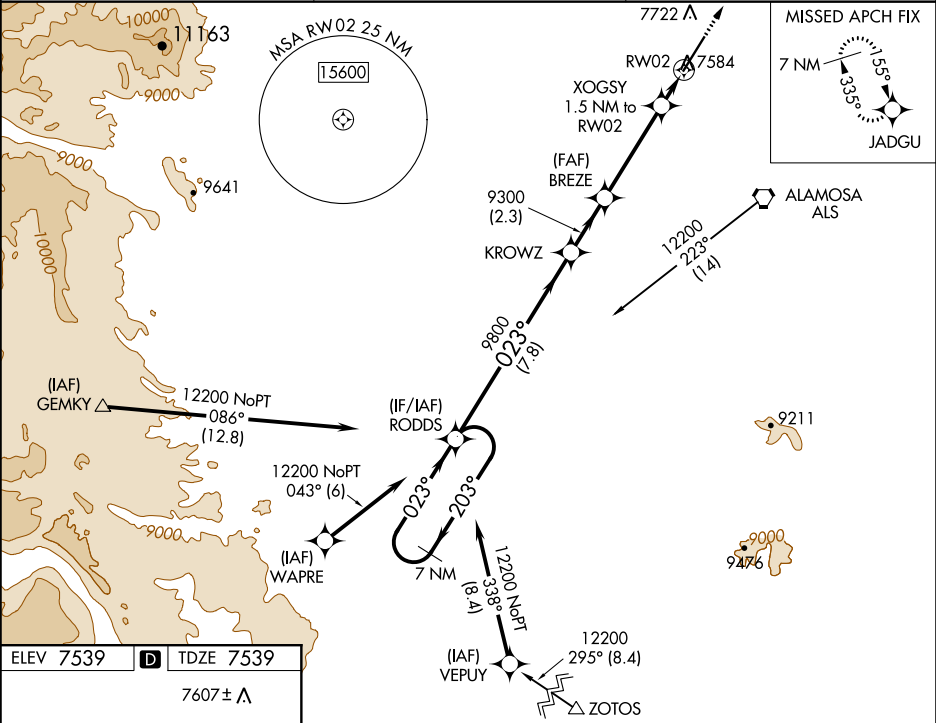
SAN LUIS VALLEY RGNL/BERGMAN FIELD (ALS)

For uncompensated Baro-VNAV systems, LNAV/VNAV NA below -29°C (-20°F) or above 44°C (111°F). DME/DME RNP -0.3 NA. For inop ALS, increase LNAV/VNAV all Cats visibility to ¾ SM and LNAV Cats C/D visibility to ⅞ SM.

MALS

MISSED APPROACH:
Climb to 10500 direct JADGU and hold.

ASOS 135.175	DENVER CENTER 128.375 379.95	UNICOM 122.8 (CTAF)
------------------------	----------------------------------------	-------------------------------



7 NM Holding Pattern		RODDS		KROWZ		BREZE		XOGSY 1.5 NM to RW02		10500	JADGU
12200		203°		023°		023°		*8060		*LNAV only	
GP 3.00°		TCH 48		9300		9300		*0.8 NM to RW02			
		7.8 NM		2.3 NM		3.9 NM		0.7 NM		0.8 NM	
CATEGORY		A		B		C		D			
LPV	DA	7739-½		200 (200-½)							
LNAV/VNAV	DA	7789-½		250 (300-½)							
LNAV	MDA	7840-½		301 (400-½)							
CIRCLING		8040-1		501 (600-1)		8080-½		541 (600-½)		8100-2	
										561 (600-2)	