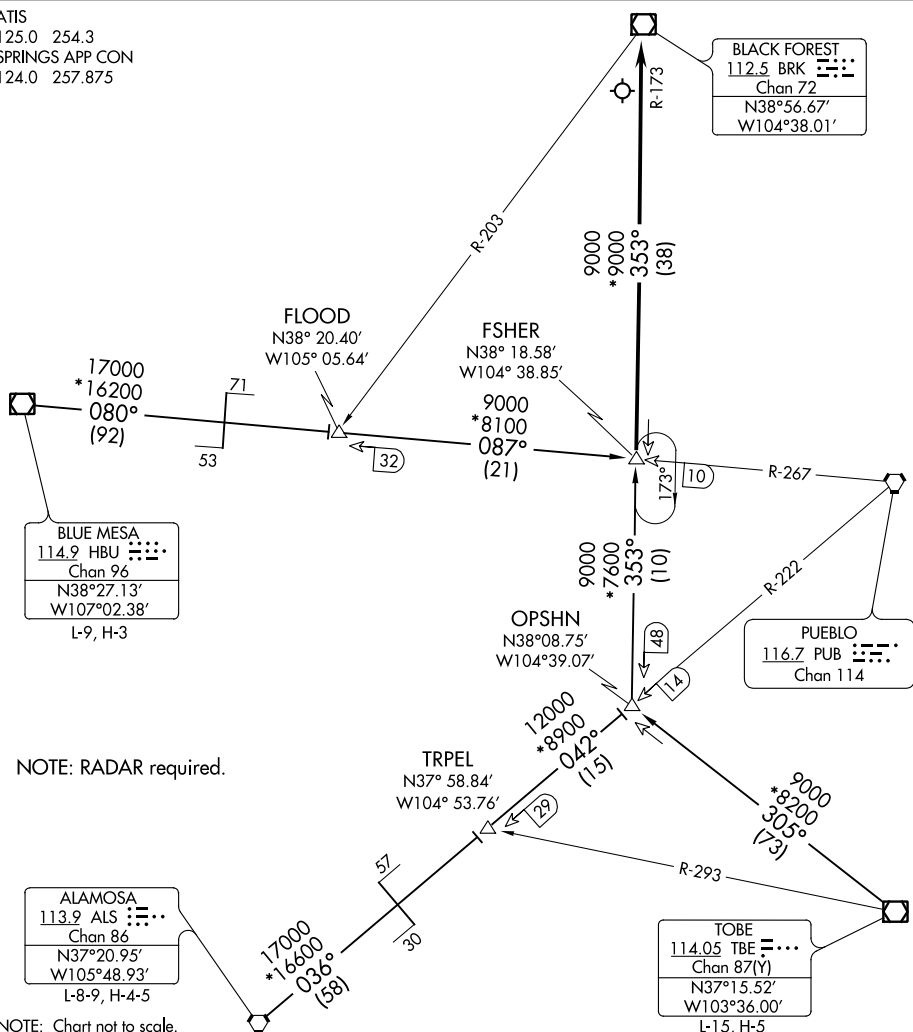


AL-87 (FAA)

ATIS	
125.0	254.3
SPRINGS APP CON	
124.0	257.875



NOTE: RADAR required.

NOTE: Chart not to scale.

ARRIVAL ROUTE DESCRIPTION

ALAMOSA TRANSITION (ALS.DBRY3): From over ALS VORTAC on ALS R-036 and PUB R-222 to TRPEI INT then on PUB R-222 and BRK R-173 to ESHER INT Thence

BLUE MESA TRANSITION (HBU.DBRY3): From over HBU VOR/DME on HBU R-080 and PUB R-267 to FLOOD INT then on PUB R-267 to FSHER INT. Thence. . .

TOBE TRANSITION (TBE.DBRY3): From over TBE VOR/DME on TBE R-305 and BRK R-173 to FSHER INT. Thence. . .

... From over FSHR INT via BRK R-173 to BRK VOR/DME. Expect RADAR vectors to the final approach course at or before BRK VOR/DME.

LOST COMMUNICATIONS: Proceed to BRK VOR/DME.

DEBERRY THREE ARRIVAL

(FSHER.DBRY3) 26MAY16

COLORADO SPRINGS, COLORADO
CITY OF COLORADO SPRINGS MUNI (COS)

SW-1, 31 DEC 2020 to 28 JAN 2021