

LOC/DME I-LPI	APP CRS	Rwy Idg	13501
109.1	172°	TDZE	6187
Chan 28		Apt Elev	6187

ILS RWY 17L (SA CAT I & II)  
CITY OF COLORADO SPRINGS MUNI (COS)

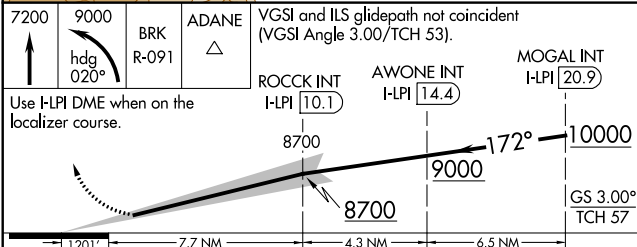
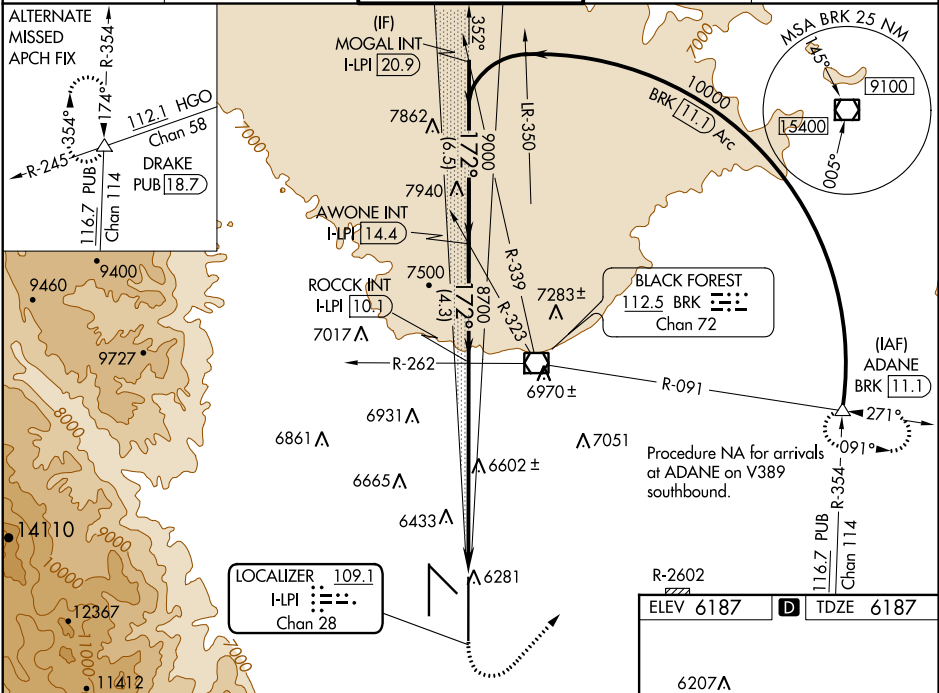
DME or RADAR required for procedure entry.

Simultaneous approach authorized with Rwy 17R.  
SA CAT I: Required specific OPSPEC, MSPEC, or LOA approval and use of HUD to DH. SA CAT II: Reduced Lighting: Requires specific OPSPEC, MSPEC, or LOA approval and use of autoland or HUD to touchdown.

MALSR

MISSED APPROACH: Climb to 7200 then climbing left turn to 9000 on heading 020° and on BRK VOR/DME R-091 to ADANE INT/BRK VOR/DME 11.1 DME and hold.

ATIS 125.0 254.3	SPRINGS APP CON 124.0 257.875	SPRINGS TOWER 119.9 360.6	GND CON 121.7 348.6	CLNC DEL 134.45 363.125
---------------------	----------------------------------	------------------------------	------------------------	----------------------------



CATEGORY	A	B	C	D
S-ILS 17L	SA CAT I	RA 169/14	150	DA 6337
S-ILS 17L	SA CAT II	RA 105/16	100	DA 6287

SA CATEGORY I & II ILS SPECIAL AIRCREW  
& AIRCRAFT CERTIFICATION REQUIRED

