

LOC/DME I-LPI	APP CRS	Rwy Idg	13501
109.1	172°	TDZE	6187
Chan 28		Apt Elev	6187

ILS or LOC RWY 17L

CITY OF COLORADO SPRINGS MUNI (COS)

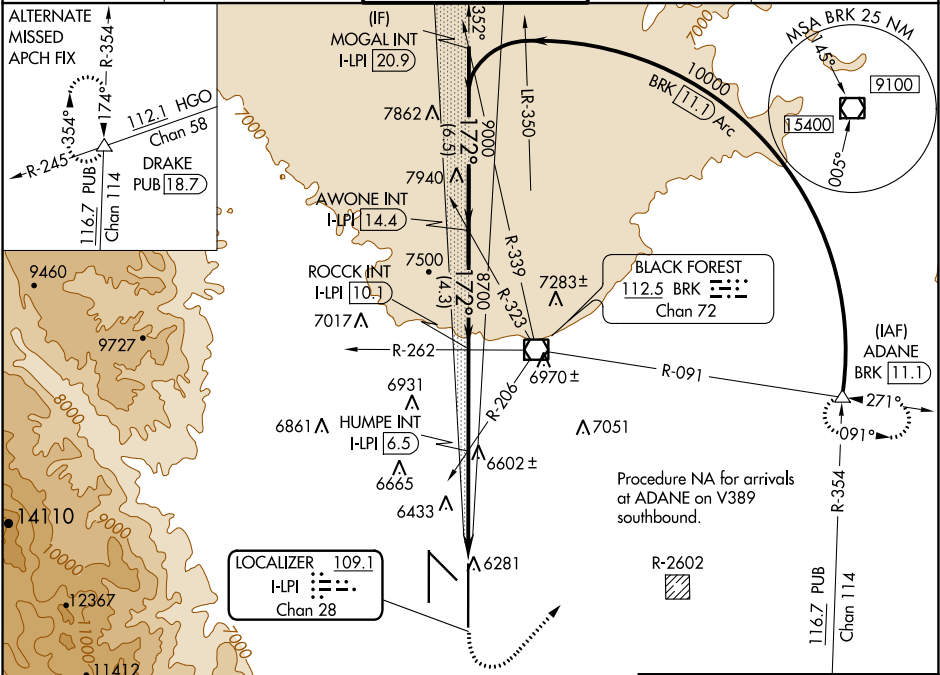
DME or RADAR required for procedure entry.

MALSRR

MISSED APPROACH: Climb to 7200 then climbing left turn to 9000 on heading 020° and on BRK VOR/DME R-091 to ADANE INT/BRK VOR/DME 11.1 DME and hold.

Simultaneous approach authorized with Rwy 17R.

ATIS	SPRINGS APP CON	SPRINGS TOWER	GND CON	CLNC DEL
125.0 254.3	124.0 257.875	119.9 360.6	121.7 348.6	134.45 363.125



	7200	9000	ADANE	VGSI and ILS glidepath not coincident (VGSI Angle 3.00/TCH 53).	MOGAL INT I-LPI 20.9
	BRK R-091				ROCCK INT I-LPI 10.1
*LOC only	I-LPI 2.4	*I-LPI 4.8	HUMPE INT I-LPI 6.5		
	2.4 NM	1.7 NM	3.6 NM	4.3 NM	6.5 NM
CATEGORY	A	B	C	D	
S-ILS 17L	6387/18 200 (200-½)				
S-LOC 17L	7540/40 1353 (1400-¾)	7540/55 1353 (1400-1)	7540-3	1353 (1400-3)	
CIRCLING	7540-1¼ 1353 (1400-1¼)	7540-1½ 1353 (1400-1½)	7540-3	1353 (1400-3)	
HUMPE FIX MINIMUMS (DUAL VOR RECEIVERS OR DME REQUIRED)					
S-LOC 17L	7020/24 833 (900-½)	7020/40 833 (900-¾)	7020-1⅞	833 (900-1⅞)	
CIRCLING	7020-1¼	833 (900-1¼)	7040-2½ 853 (900-2½)	7260-3 1073 (1100-3)	

