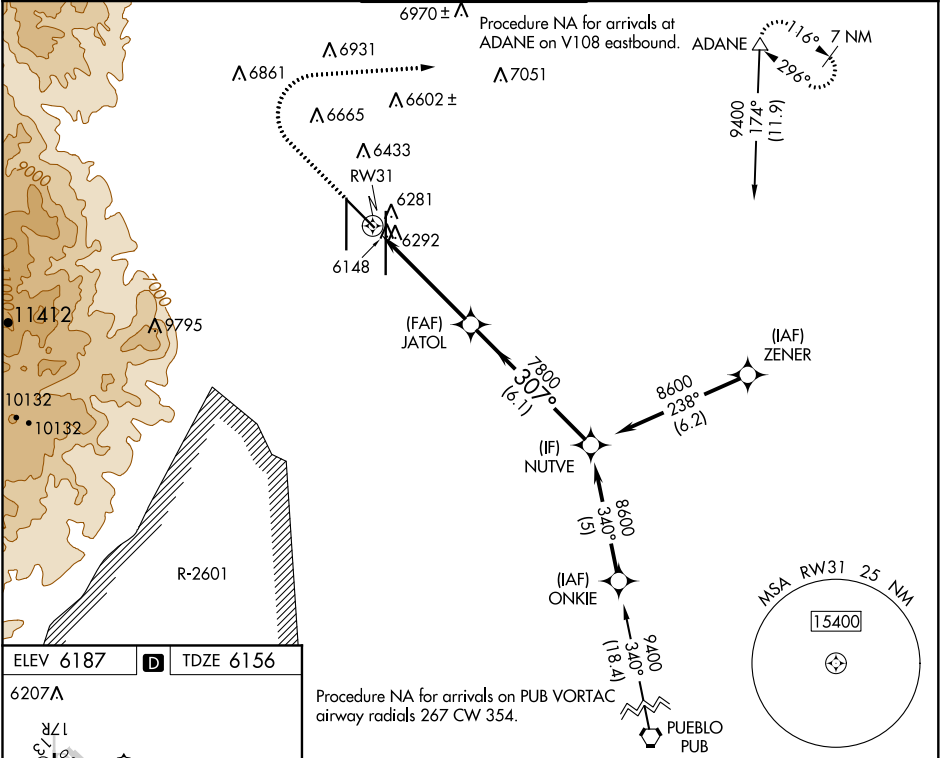


WAAS CH 40040 W31A	APP CRS 307°	Rwy Idg TDZE Apt Elev	7913 6156 6187
--	------------------------	-----------------------------	---

RNAV (GPS) RWY 31
CITY OF COLORADO SPRINGS MUNI (COS)

DME/DME RNP-0.3 NA.		MISSED APPROACH: Climb to 6700 then climbing right turn to 9000 direct ADANE and hold.		
---------------------	--	--	--	--

ATIS 125.0 254.3	SPRINGS APP CON 124.0 257.875	SPRINGS TOWER 119.9 360.6	GND CON 121.7 348.6	CLNC DEL 134.45 363.125
----------------------------	---	-------------------------------------	-------------------------------	-----------------------------------



MIRL Rwy 13-31
HIRL Rwys 17R-35L and 17L-35R
REIL Rwys 13, 17R, 31 and 35R
TDZ/CL Rwys 17L and 35R

6700		9000		ADANE △	
RW31		JATOL		NUTVE	
0.8 NM to RW31		7800		8600	
0.8		4.2 NM		6.1 NM	
CATEGORY		A		B	
LP MDA		6440-1		284 (300-1)	
LNAV MDA		6560-1		404 (400-1)	
CIRCLING		6740-1		6800-1	
		553 (600-1)		613 (700-1)	
		7040-2½		7260-3	
		853 (900-2½)		1073 (1100-3)	

SW-1, 31 DEC 2020 to 28 JAN 2021

SW-1, 31 DEC 2020 to 28 JAN 2021