

APP CRS	Rwy Idg	13501
172°	TDZE	6187
	Apt Elev	6187

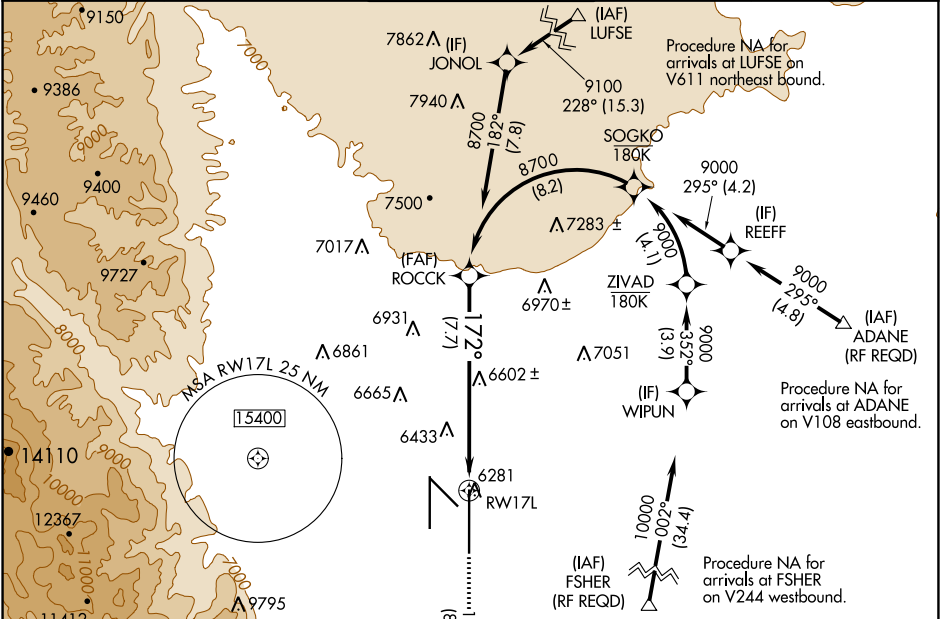
RNAV (RNP) Z RWY 17L
CITY OF COLORADO SPRINGS MUNI (COS)

For uncompensated Baro-VNAV systems, procedure NA below -21°C (-5°F) or above 44°C (112°F). GPS required.

MALSR

MISSED APPROACH: Climb to 9000 on track 172° to CEGIX and on track 130° to JEMKI and on track 084° to DRAKE and hold.

ATIS 125.0 254.3	SPRINGS APP CON 124.0 257.875	SPRINGS TOWER 119.9 360.6	GND CON 121.7 348.6	CLNC DEL 134.45 363.125
----------------------------	---	-------------------------------------	-------------------------------	-----------------------------------



ELEV 6187 **D** TDZE 6187

The diagram shows the descent path for RWY 17L. Key altitudes include 6207A, 6239, 6340, and 35L. The path is defined by a 172° track and a 130° track. The descent is marked with "0.6% DOWN" and "0.6% UP".

MIRL Rwy 13-31
HIRL Rwys 17R-35L and 17L-35R
REIL Rwys 13, 17R, 31 and 35R
TDZ/CL Rwys 17L and 35R

MISSED APCH FIX

The diagram shows the missed approach fix for RWY 17L. It includes a 130° track (15.3) leading to DRAKE, and a 084° track (9.3) leading to JEMKI. The distance from DRAKE to JEMKI is 7 NM.

9000	CEGIX	tr 130°	JEMKI	tr 084°	DRAKE
------	-------	---------	-------	---------	-------

VGSI and RNAV glidepath not coincident (VGSI Angle 3.00/TCH 53).

The planview diagram shows the glidepath for RWY 17L. It includes a 172° track and a 8700 ft altitude. The distance from the start of the glidepath to the runway is 7.7 NM. The glidepath is marked with "GP 3.00° TCH 57".

CATEGORY	A	B	C	D
RNP 0.15 DA	6557/40	370 (400-3/4)		
RNP 0.25 DA	6644/50	457 (500-1)		
RNP 0.30 DA	6920-2	733 (800-2)		

AUTHORIZATION REQUIRED

SW-1, 31 DEC 2020 to 28 JAN 2021

SW-1, 31 DEC 2020 to 28 JAN 2021