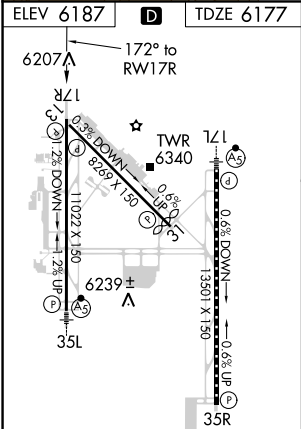
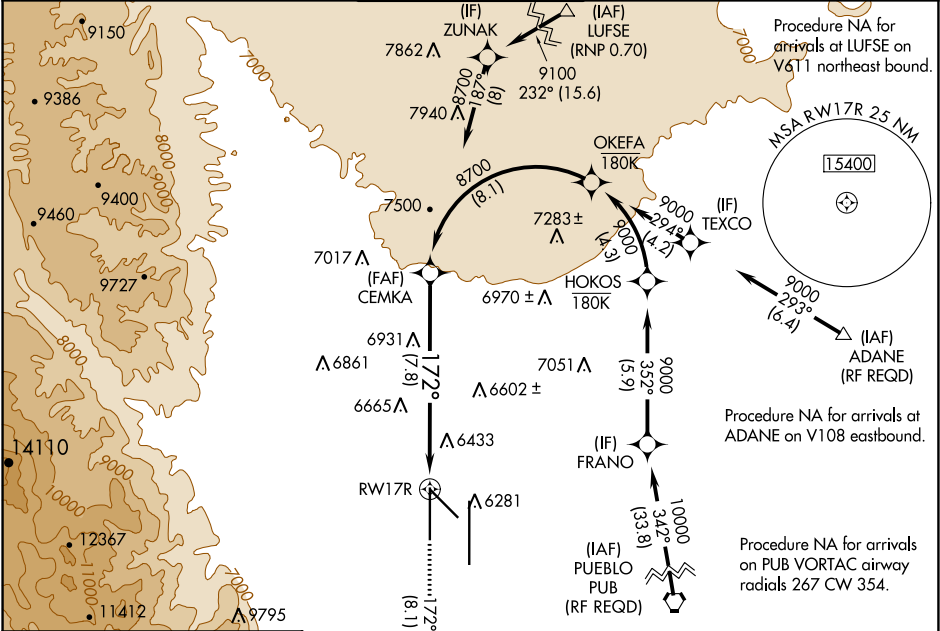


APP CRS	Rwy Idg	11022
172°	TDZE	6177
	Apt Elev	6187

RNAV (RNP) Z RWY 17R
CITY OF COLORADO SPRINGS MUNI (COS)

<p>⚠ For uncompensated Baro-VNAV systems, procedure NA below -21°C (-5°F) or above 45°C (113°F). GPS required. Simultaneous approach authorized.</p>	<p>MISSED APPROACH: Climb to 9000 on track 172° to KUSAC and on track 125° to JEMKI and on track 084° to DRAKE and hold.</p>
---	---

ATIS 125.0 254.3	SPRINGS APP CON 124.0 257.875	SPRINGS TOWER 119.9 360.6	GND CON 121.7 348.6	CLNC DEL 134.45 363.125
----------------------------	---	-------------------------------------	-------------------------------	-----------------------------------



MIRL Rwy 13-31
HIRL Rws 17R-35L and 17L-35R
REIL Rws 13, 17R, 31 and 35R
TDZ/CL Rws 17L and 35R

See planview for multiple IF locations.			
9000	KUSAC	JEMKI	DRAKE
tr 172°	tr 125°	tr 084°	
7.8 NM			
CATEGORY	A	B	C
RNP 0.22 DA	6659-1 $\frac{1}{8}$	482 (500-1 $\frac{1}{8}$)	
RNP 0.30 DA	6902-2 $\frac{1}{2}$	725 (800-2 $\frac{1}{2}$)	

AUTHORIZATION REQUIRED

SW-1, 31 DEC 2020 to 28 JAN 2021

SW-1, 31 DEC 2020 to 28 JAN 2021