

WAAS CH 72800 W17B	APP CRS 172°	Rwy Idg 11022 TDZE 6177 Apt Elev 6187
--	------------------------	--

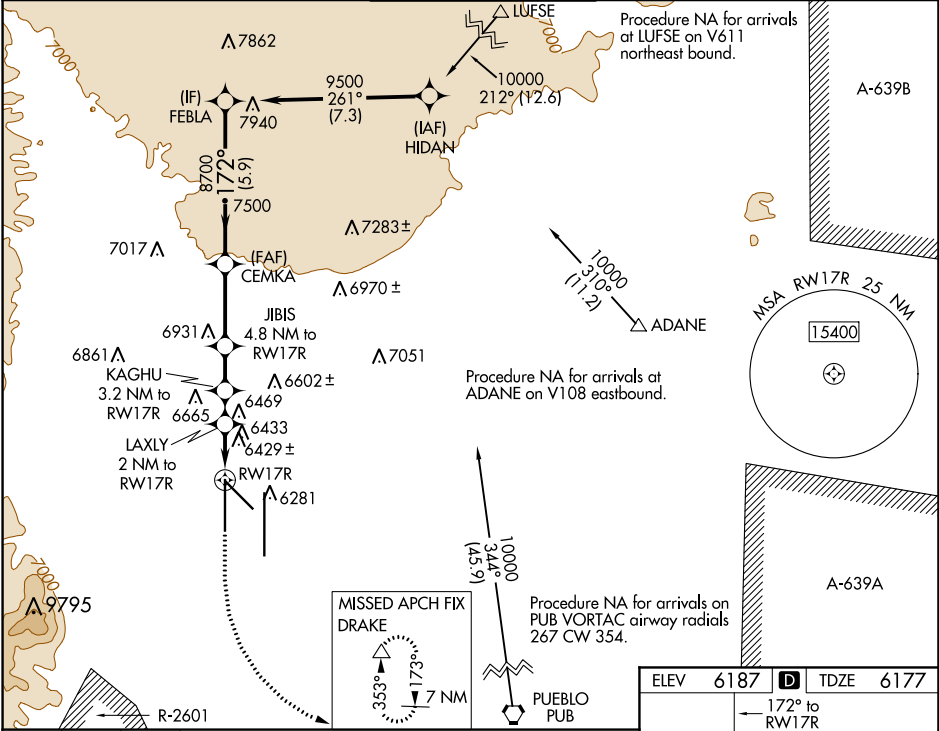
RNAV (GPS) Y RWY 17R

CITY OF COLORADO SPRINGS MUNI (COS)

For uncompensated Baro-VNAV systems, LNAV/VNAV NA below -21°C (-5°F) or above 54°C (130°F). DME/DME RNP-0.3 NA. Simultaneous approach authorized with ILS or LOC RWY 17L and ILS RWY 17L (SA CAT I). LNAV procedure NA during simultaneous operations. Use of FD or AP providing RNAV track guidance required during simultaneous operations.

MISSED APPROACH: Climb to 7000 then climbing left turn to 9000 direct DRAKE and hold.

ATIS 125.0 254.3	SPRINGS APP CON 124.0 257.875	SPRINGS TOWER 119.9 360.6	GND CON 121.7 348.6	CLNC DEL 134.45 363.125
----------------------------	---	-------------------------------------	-------------------------------	-----------------------------------



7000 ↑	9000 ↖	DRAKE △					
*LNAV only			LAXLY 2 NM to RW17R	KAGHU 3.2 NM to RW17R	JIBIS 4.8 NM to RW17R	CEMKA 8700	FEBLA 9500
RW17R ↙ *1.4 NM to RW17R			6860*	7240*	7760*	8700	GP 3.00° TCH 55
1.4 NM			0.6 NM	1.2 NM	1.6 NM	3 NM	5.9 NM
CATEGORY		A	B		C		D
LPV	DA	6377/40 200 (200-¾)					
LNAV/ VNAV	DA	6752-2 575 (600-2)					
LNAV	MDA	6680/55	503 (500-1)		6680-1⅓		503 (500-1⅓)
CIRCLING		6740-1 553 (600-1)	6800-1 613 (700-1)		7040-2½ 853 (900-2½)		7260-3 1073 (1100-3)

