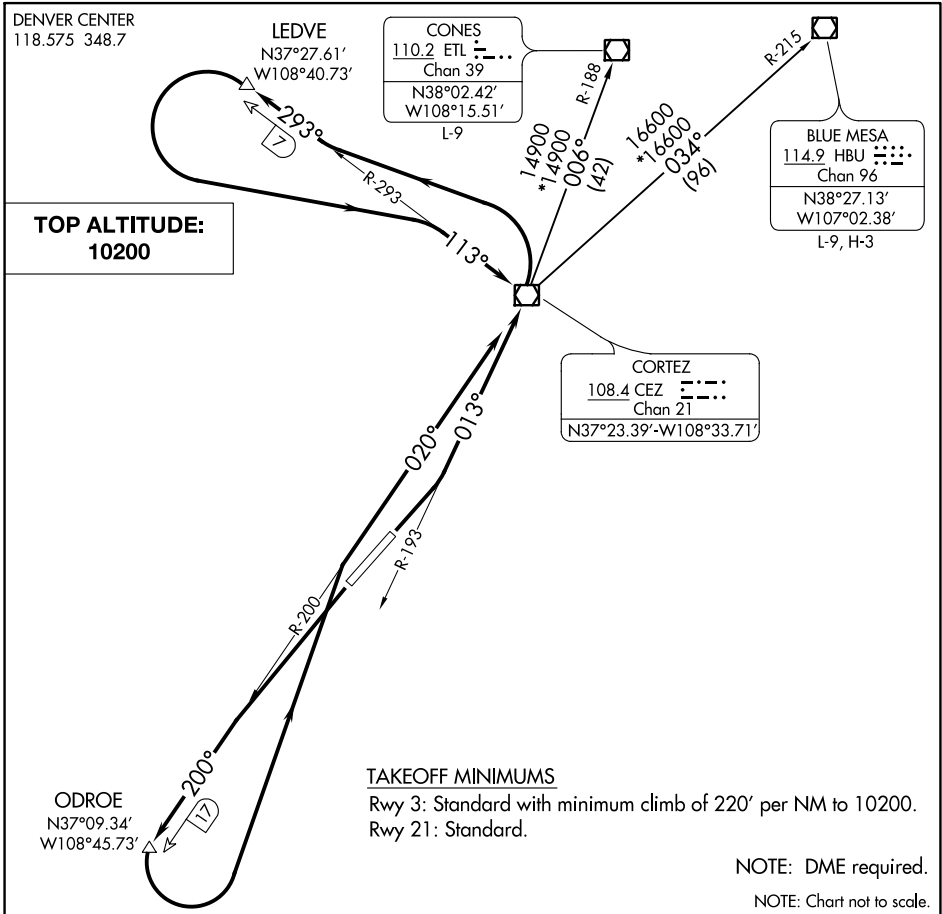


CORTEZ TWO DEPARTURE

AL-112 (FAA)

CORTEZ MUNI (CEZ)
CORTEZ, COLORADO



DEPARTURE ROUTE DESCRIPTION

TAKEOFF RUNWAY 3: Climbing left turn to 7100 on CEZ R-193 to CEZ VOR/DME. Continue climbing left turn to 8600 on CEZ R-293 to LEDVE/CEZ 7 DME, then climbing left turn to 10200 on CEZ R-293 to CEZ VOR/DME. Cross CEZ VOR/DME at or above 10200 for route of flight. Thence. . .

TAKEOFF RUNWAY 21: Climbing left turn to 7900 on CEZ R-200 to ODROE/CEZ 17 DME, then climbing left turn to 10200 on CEZ R-200 to CEZ VOR/DME. Cross CEZ VOR/DME at or above 10200 for route of flight. Thence. . .

. . . via (transition) or (assigned route).

BLUE MESA TRANSITION (CEZ2.HBU): From over CEZ VOR/DME on CEZ R-034 and HBU R-215 to HBU VOR/DME.

CONES TRANSITION (CEZ2.ETL): From over CEZ VOR/DME on CEZ R-006 and ETL R-188 to ETL VOR/DME.

CORTEZ TWO DEPARTURE