

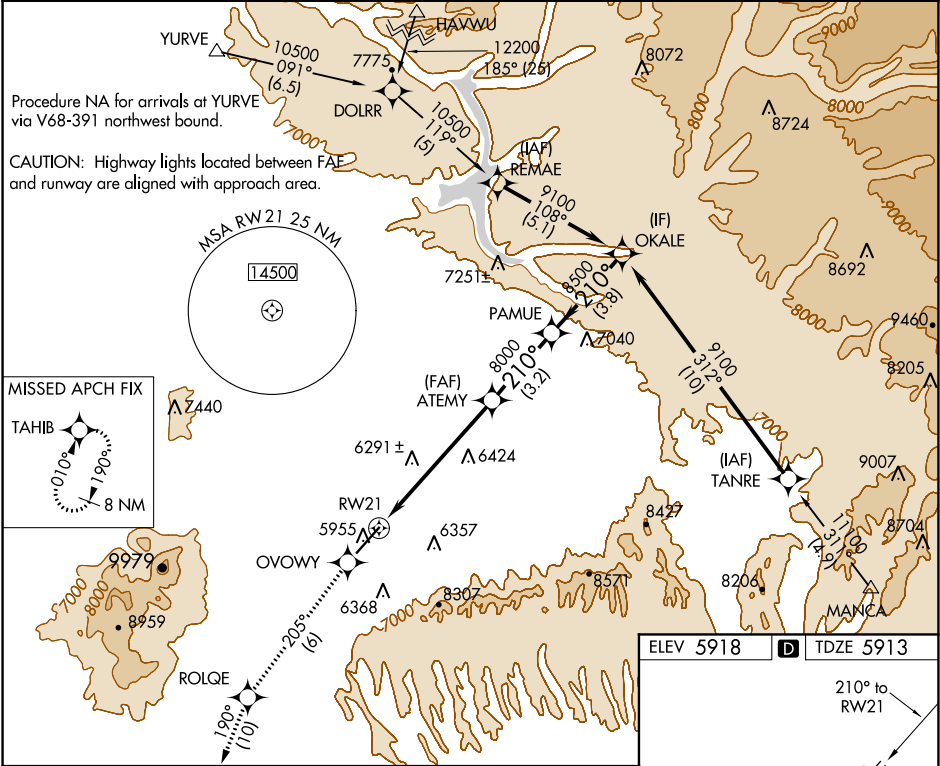
WAAS CH 99699 W21A	APP CRS 210°	Rwy Idg 7205 TDZE 5913 Apt Elev 5918
--	------------------------	---

RNAV (GPS) Z RWY 21

CORTEZ MUNI (C/EZ)

RNP APCH. <div><div>▼</div><div>▲</div></div>	When VGSI inop, procedure NA at night.	MISSED APPROACH: Climb to 9000 direct OVOWY and via 205° track to ROLQE and via 190° track to TAHIB and hold.
--	--	---

ASOS 135.625	DENVER CENTER 118.575 348.7	UNICOM 122.8 (CTAF) 0
------------------------	---------------------------------------	---------------------------------



9000 ↑	OVOWY ✧	tr 205°	ROLQE ✧	tr 190°	TAHIB ✧	PAMUE	OKALE
VGSI and RNAV glidepath not coincident (VGSI Angle 3.00/TCH 50).						ATEMY	
RW21		✕				8500	9100
6.1 NM		3.2 NM		3.8 NM		Procedure Turn NA GP 3.10° TCH 50	
CATEGORY	A		B		C		D
LPV DA	6215-1 302 (300-1)						
LNAV/VNAV DA	NA						
LNAV MDA	7140-1¼ 1227 (1300-1¼)		7140-1½ 1227 (1300-1½)		7140-3 1227 (1300-3)		

