

| | | |
|--|------------------------|---|
| WAAS CH 93813 W26A | APP CRS 261° | Rwy ldg 6849 TDZE 4188 Apt Elev 4229 |
|--|------------------------|---|

RNAV (GPS) RWY 26

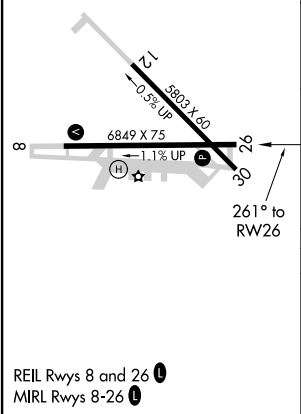
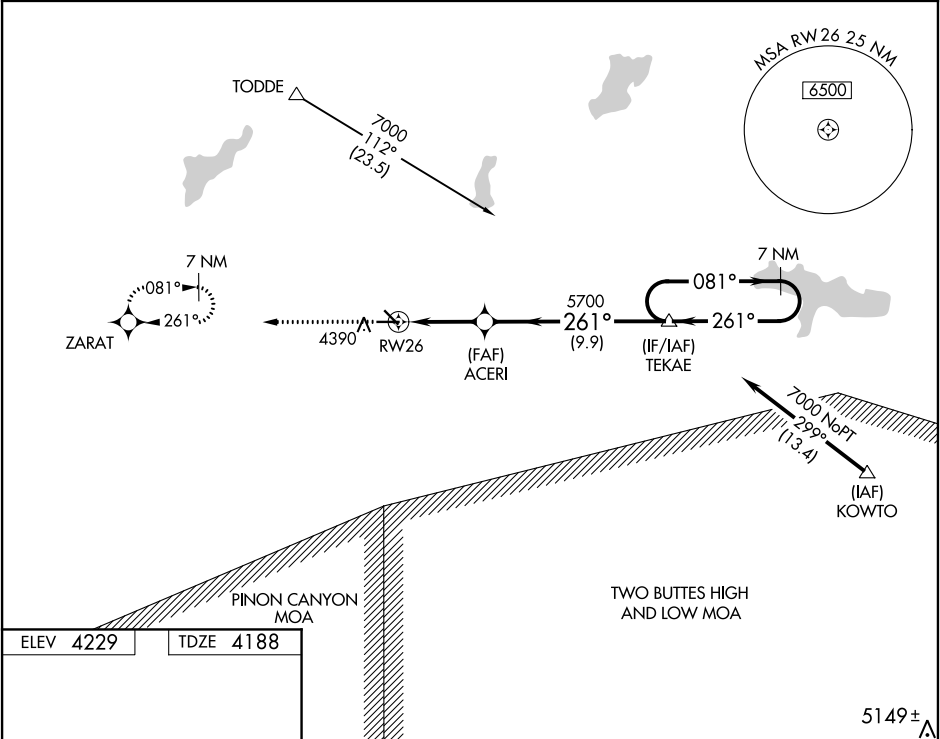
LA JUNTA MUNI (LHX)

⚠

For uncompensated Baro-VNAV systems, LNAV/VNAV NA below -23°C (-9°F) or above 40°C (104°F). DME/DME RNP-0.3 NA. Baro-VNAV and VDP NA when using Lamar altimeter setting. When local altimeter setting not received, use Lamar altimeter setting and increase all DA/MDA 180 feet and increase all visibility ¾ mile.

MISSED APPROACH: Climb to 7000 direct ZARAT and hold.

| | | |
|------------------------|--|---------------------------------|
| ASOS 135.525 | DENVER CENTER 128.375 379.95 | UNICOM 123.0 (CTAF) 0 |
|------------------------|--|---------------------------------|



| | | | | |
|--------------|-------------------|-------------|-------------------------|-----------------------|
| 7000 | ZARAT | ACERI | TEKAE | 7 NM Holding Pattern |
| *LNAV only. | *0.9 NM to RWY 26 | 5700 | 5700 | GP 3.00° TCH 43 |
| 0.9 | 3.8 NM | 9.9 NM | | |
| CATEGORY | A | B | C | D |
| LPV DA | 4438-1 | 250 (300-1) | | |
| LNAV/VNAV DA | 4438-1 | 250 (300-1) | | |
| LNAV MDA | 4480-1 | 292 (300-1) | | |
| CIRCLING | 4740-1 | 511 (600-1) | 4740-1½ 511 (600-1½) | 4780-2 551 (600-2) |

SW-1, 31 DEC 2020 to 28 JAN 2021

SW-1, 31 DEC 2020 to 28 JAN 2021