

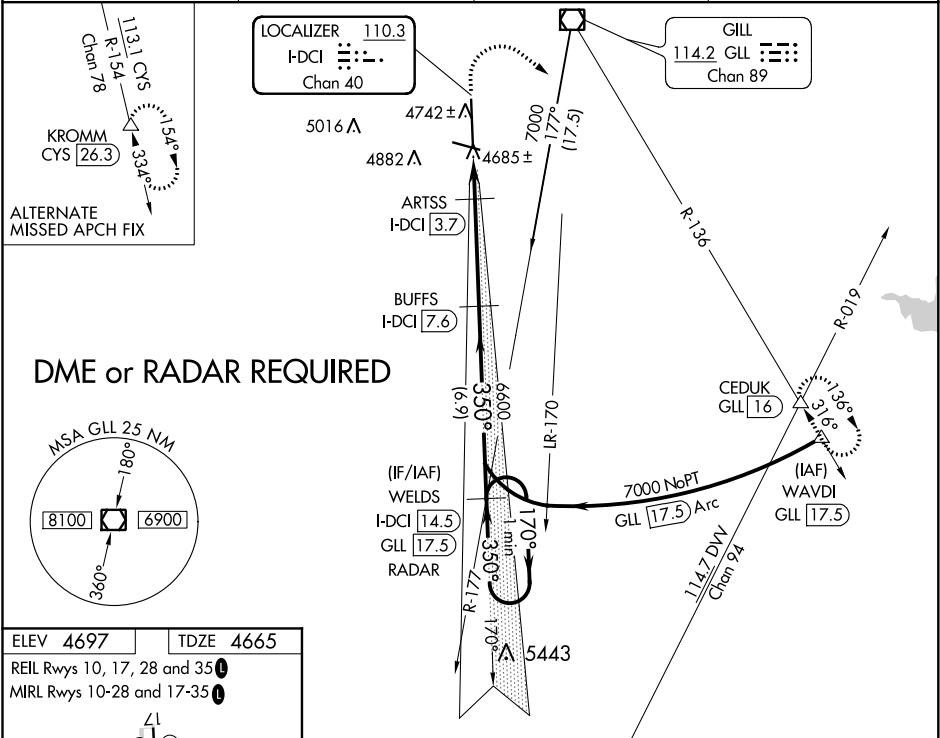
LOC/DME I-DCI 110.3 Chan 40	APP CRS 350°	Rwy Idg TDZE Apt Elev	8900 4665 4697
---	------------------------	-----------------------------	---

ILS or LOC RWY 35
GREELEY-WELD COUNTY (GXY)

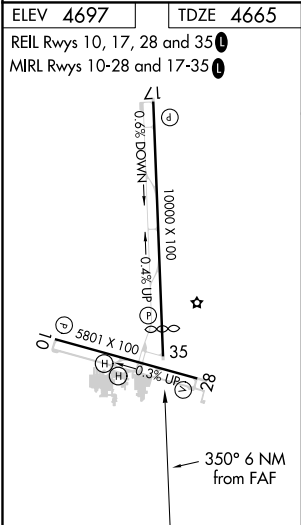
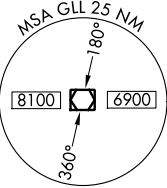
⚠ VDP NA when using Northern Colorado Rgnl altimeter setting. When local altimeter not received, use Northern Colorado Rgnl altimeter setting and increase DA to 4950 feet and all visibilities ¼ SM; increase all MDAs 100 feet and visibility Cats C and D ½ SM.

MISSED APPROACH: Climb to 5300 then climbing right turn to 7000 on heading 120° and GLL VOR/DME R-136 to CEDUK INT/GLL 16 DME and hold.

AWOS-3PT 135.175	DENVER APP CON 134.85 251.125	CLNC DEL 126.65	UNICOM 122.8 (CTAF) ①
----------------------------	---	---------------------------	---------------------------------



DME or RADAR REQUIRED



5300	7000	GLL R-136	CEDUK	Use I-DCI DME when on the localizer course.
↑	hdg 120°	△		
*LOC only	ARTSS I-DCI 3.7	BUFFS I-DCI 7.6	WELDS I-DCI 14.5	One Minute Holding Pattern
I-DCI 1.6	I-DCI 2.9	6600	350°	170° → 7000
1.2	0.8	3.9 NM	6.9 NM	GS 3.00° TCH 51
CATEGORY	A	B	C	D
S-ILS 35	4865-¾	200 (200-¾)		
S-LOC 35	5100-1	435 (500-1)	5100-1¼	435 (500-1¼)
CIRCLING	5120-1 423 (500-1)	5200-1 503 (600-1)	5200-1½ 503 (600-1½)	5380-2¼ 683 (700-2¼)