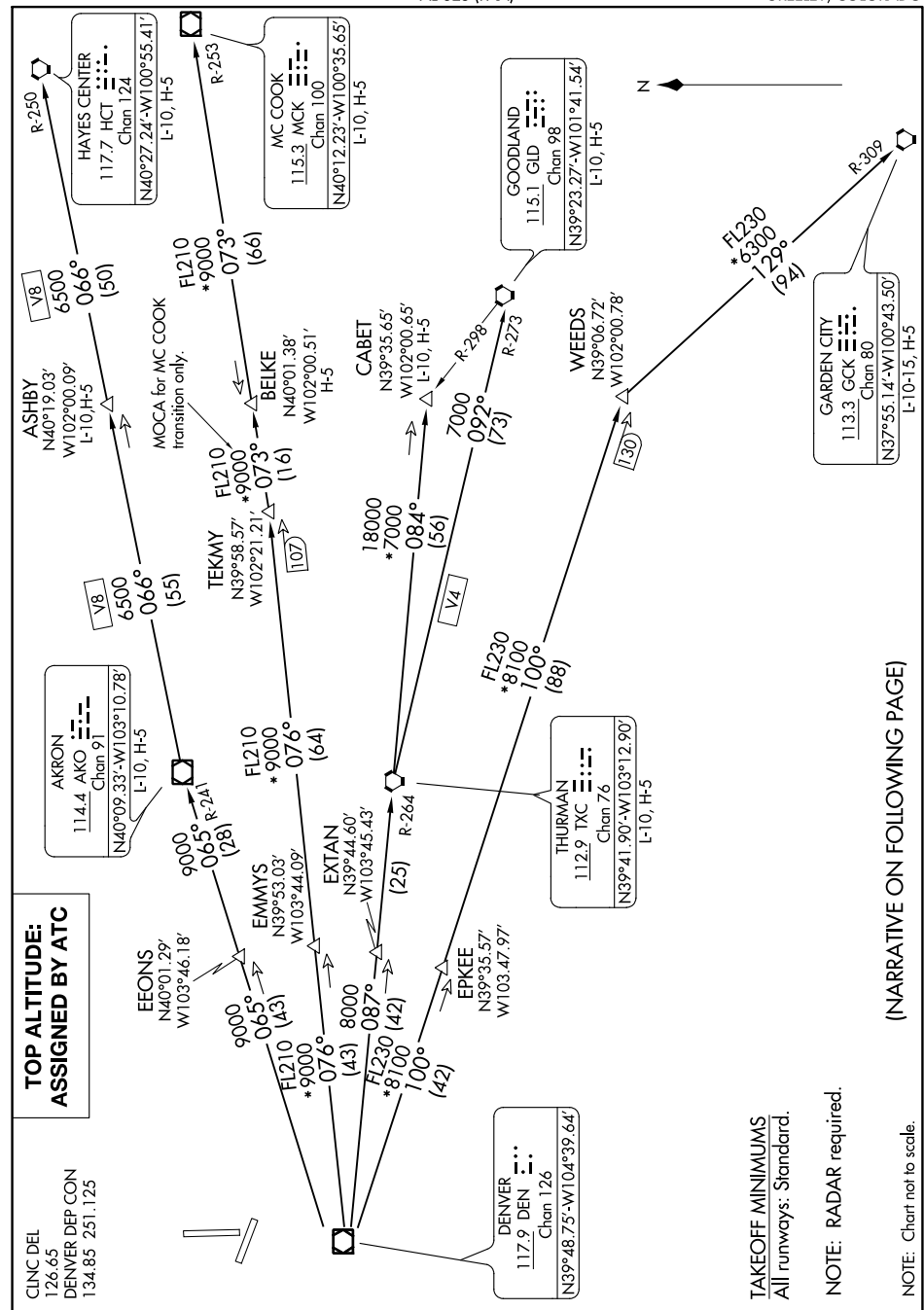


PLAINS ONE DEPARTURE

AL-325 (FAA)

Greeley-Weld County (GXY)

GREELEY, COLORADO



(NARRATIVE ON FOLLOWING PAGE)

NOTE: Chart not to scale.

SW-1, 31 DEC 2020 to 28 JAN 2021

PLAINS ONE DEPARTURE

(PLAIN1.DEN) 30JAN20

GREELEY, COLORADO

GREELEY-WELD COUNTY (GXY)