

WAAS CH <b>72708</b> <b>W17A</b>	APP CRS <b>170°</b>	Rwy Idg TDZE <b>4697</b> Apt Elev <b>4697</b>
--	------------------------	---

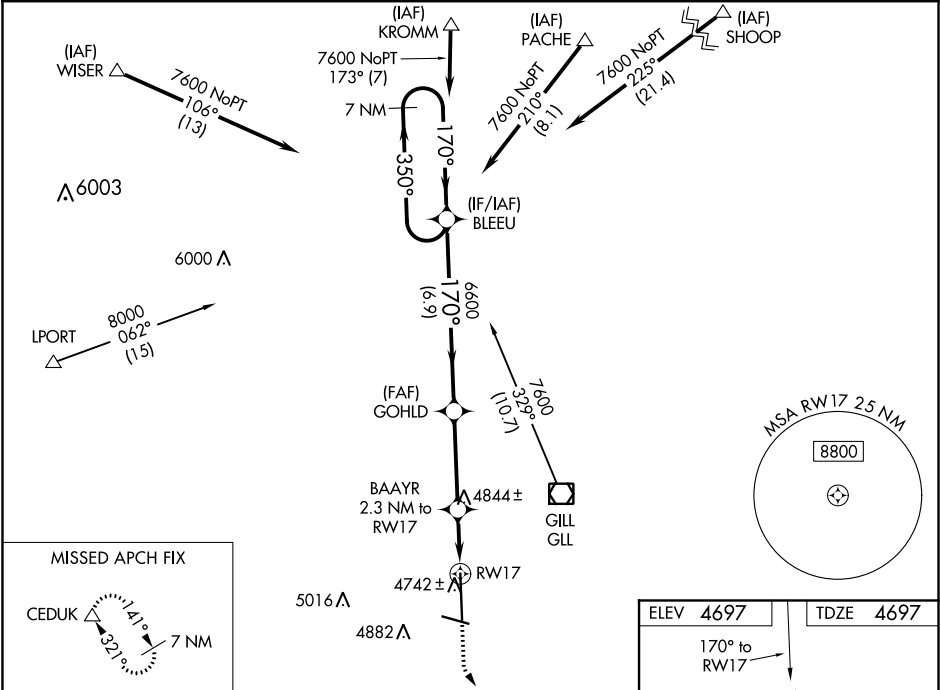
RNAV (GPS) RWY 17

GREELEY-WELD COUNTY (GXY)

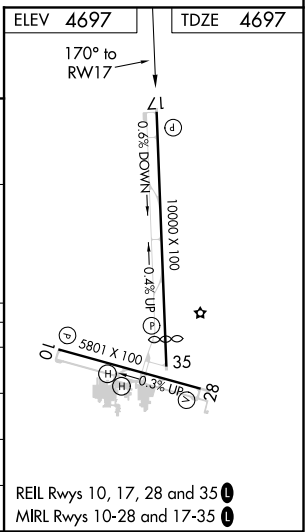
**⚠** For uncompensated Baro-VNAV systems, LNAV/VNAV NA below -24°C (-11°F) or above 50°C (123°F). DME/DME RNP-0.3 NA. When local altimeter setting not received, use Northern Colorado Rgnl altimeter setting: increase LPV DA to 4982 feet and visibility 1/8 SM and LNAV/VNAV DA to 5032 feet and visibility 1/4 SM; increase all MDAs 100 feet and visibility LNAV Cat C 1/8 SM and Circling Cat C/D 1/4 SM. VDP and Baro-VNAV NA when using Northern Colorado Rgnl altimeter setting. Rwy 17 helicopter visibility below 3/4 SM NA.

**MISSED APPROACH:** Climb to 5400 then climbing left turn to 7000 direct CEDUK and hold.

AWOS-3PT <b>135.175</b>	DENVER APP CON <b>134.85 251.125</b>	CLNC DEL <b>126.65</b>	UNICOM <b>122.8</b> (CTAF) <b>📻</b>
----------------------------	---	---------------------------	--



7 NM Holding Pattern		BLEEU	GOHLD	BAAAYR	CEDUK
7600		6600	5400	7000	
GP 3.00° TCH 46					
6.9 NM		3.5 NM	1.1 NM	1.2 NM	
CATEGORY	A	B	C	D	
LPV DA	4897-3/4 200 (200-3/4)				
LNAV/VNAV DA	4947-3/4 250 (300-3/4)				
LNAV MDA	5140-1	443 (500-1)	5140-1 1/2 443 (500-1 1/2)	5140-2 1/4 443 (500-2 1/4)	
CIRCLING	5140-1 443 (500-1)	5200-1 503 (600-1)	5200-1 1/2 503 (600-1 1/2)	5380-2 1/4 683 (700-2 1/4)	



SW-1, 31 DEC 2020 to 28 JAN 2021

SW-1, 31 DEC 2020 to 28 JAN 2021