

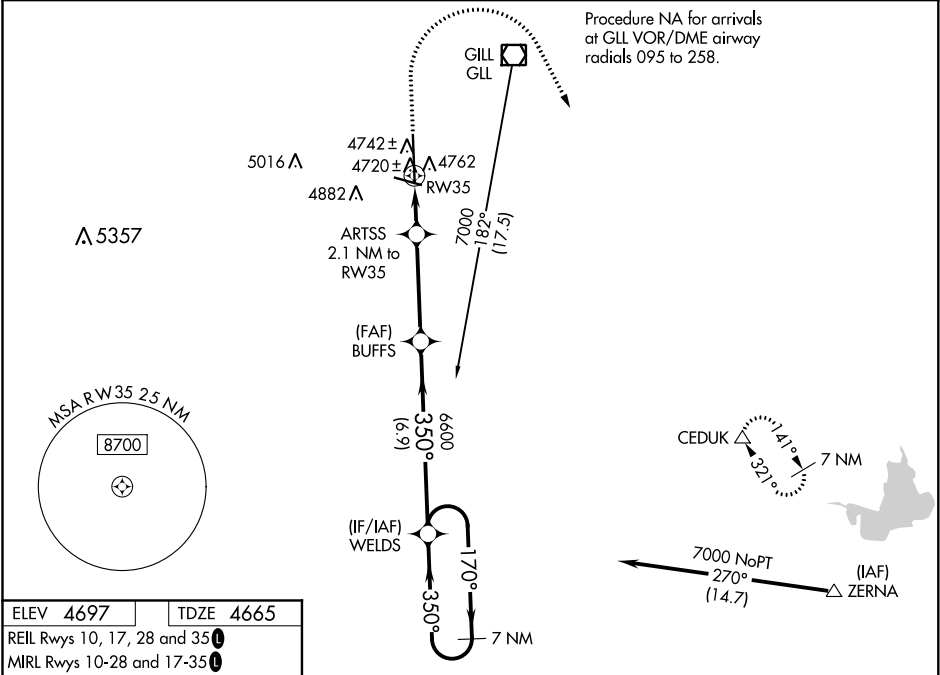
WAAS CH 69607 W35A	APP CRS 350°	Rwy Idg TDZE Apt Elev	8900 4665 4697
--	------------------------	-----------------------------	---

RNAV (GPS) RWY 35
GREELEY-WELD COUNTY (GXY)

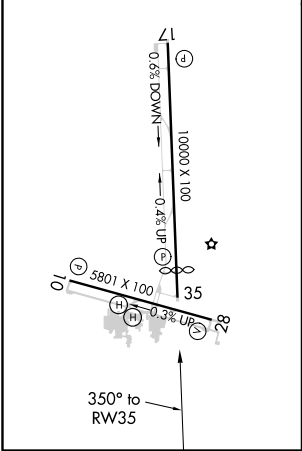
⚠ For uncompensated Baro-VNAV systems, LNAV/VNAV NA below -24°C (-11°F) or above 49°C (121°F). DME/DME RNP-0.3 NA. When local altimeter setting not received, use Northern Colorado Rgnl altimeter setting: increase LPV DA to 4950 feet and visibility ¼ SM, LNAV/VNAV DA to 5000 feet and visibility ¼ SM; increase all MDAs 100 feet and visibility LNAV Cat C/D ¾ SM and Circling Cat C/D ¼ SM. VDP and Baro-VNAV NA when using Northern Colorado Rgnl altimeter setting.

⚠ MISSED APPROACH: Climb to 5300 then climbing right turn to 7000 direct CEDUK and hold.

AWOS-3PT 135.175	DENVER APP CON 134.85 251.125	CLNC DEL 126.65	UNICOM 122.8 (CTAF) 0
----------------------------	---	---------------------------	---------------------------------



ELEV 4697	TDZE 4665
REIL Rwy 10, 17, 28 and 35	
MIRL Rwy 10-28 and 17-35	



5300	7000	CEDUK	WELDS	7 NM Holding Pattern
ARTSS 2.1 NM to RW35	BUFFS 6600	WELDS 6600	7000	GP 3.00° TCH 51
*LNAV only	*1 NM to RW35	3.9 NM	6.9 NM	
CATEGORY	A	B	C	D
LPV DA	4865-¾	200 (200-¾)		
LNAV/VNAV DA	4915-¾	250 (300-¾)		
LNAV MDA	5020-1	355 (400-1)		
CIRCLING	5120-1 423 (500-1)	5200-1 503 (600-1)	5200-1½ 503 (600-1½)	5380-2¼ 683 (700-2¼)