

VORTAC TCC
113.6
Chan **83**

APP CRS
201°

Rwy Idg
TDZE
Apt Elev
7104
4047
4065

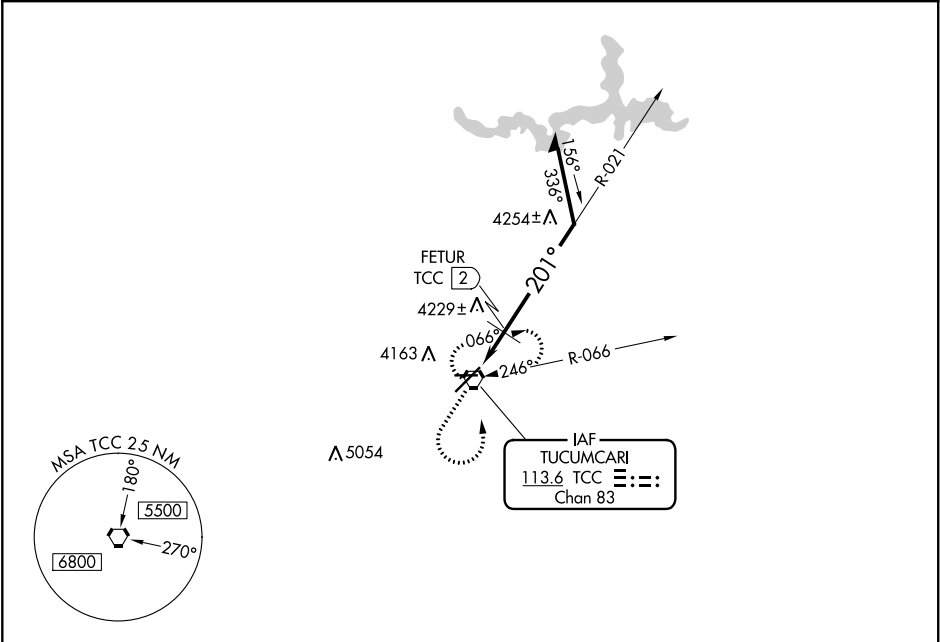
VOR RWY 21
TUCUMCARI MUNI (TCC)

▼

If local altimeter setting not received, procedure NA.
Circling NA for Cat D north of Rwy 8 and northwest of Rwy 21.

MISSED APPROACH: Climb to 5100 then climbing left turn to 6100 direct TCC VORTAC and hold.

| | | |
|------------------------|---|----------------------------------|
| ASOS 119.275 | ALBUQUERQUE CENTER 126.85 285.6 | UNICOM 122.95 (CTAF) 0 |
|------------------------|---|----------------------------------|



ELEV 4065

TDZE 4047

201° to VORTAC

MIRL Rwy 3-21 and 8-26 0

| | | | | | | |
|--------------------|------|--------|-----------------|-------------------------|-------------------------|--|
| 5100 | 6100 | TCC | TCC VORTAC 6100 | | 5229 | |
| ↑ | ↶ | ⬡ | | | Remain within 10 NM | |
| CATEGORY | | A | B | C | D | |
| S-21 | | 4600-1 | 553 (600-1) | 4600-1½ 553 (600-1½) | 4600-1¾ 553 (600-1¾) | |
| CIRCLING | | 4600-1 | 535 (600-1) | 4600-1½ 535 (600-1½) | 4640-2 575 (600-2) | |
| FETUR FIX MINIMUMS | | | | | | |
| S-21 | | 4480-1 | 433 (500-1) | 4480-1¼ 433 (500-1¼) | 4480-1½ 433 (500-1½) | |
| CIRCLING | | 4580-1 | 515 (600-1) | 4580-1½ 515 (600-1½) | 4640-2 575 (600-2) | |