

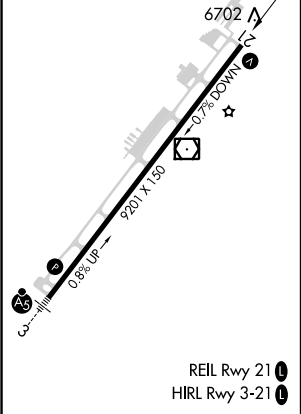
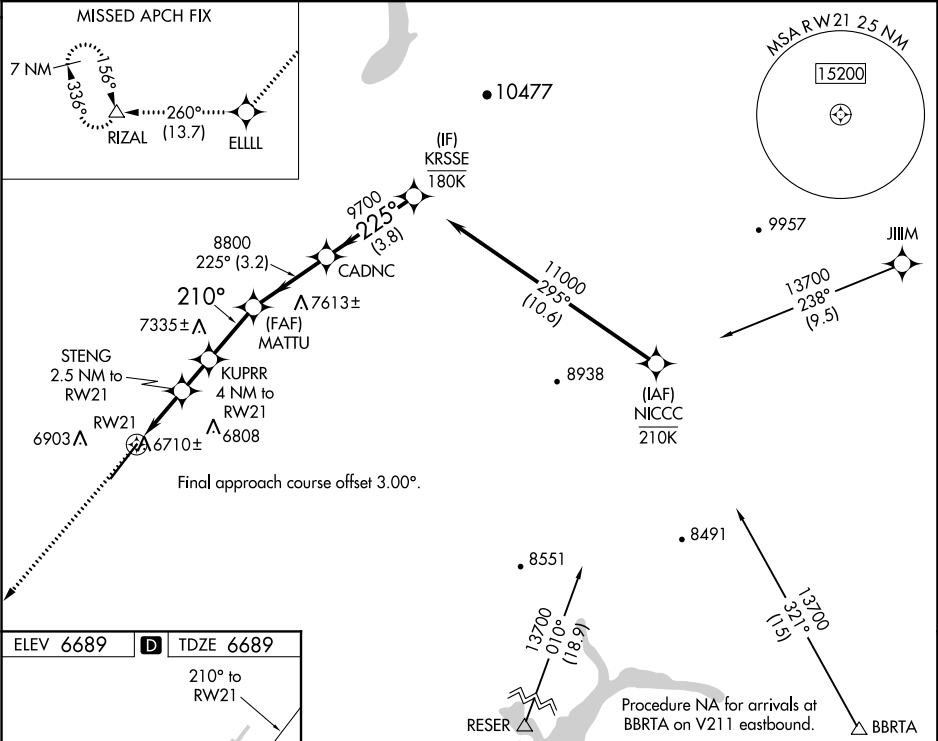
APP CRS	Rwy Idg	9201
210°	TDZE	6689
	Apt Elev	6689

RNAV (GPS) RWY 21

DURANGO-LA PLATA COUNTY (DRO)

RNP APCH.	MISSED APPROACH: Climb to 11000 direct ELLLL and on track 260° to RIZAL and hold.
Rwy 21 helicopter visibility reduction below 3/4 SM NA. For uncompensated Baro-VNAV systems, LNAV/VNAV NA below -20°C or above 54°C.	

ASOS 120.625	DENVER CENTER 118.575 348.7	UNICOM 122.8 (CTAF) 0
-----------------	--------------------------------	--------------------------



11000 ↑	ELLLL ✦	tr 260° ✧	RIZAL △						
*LNAV only									
RW21 *1.2 NM to RW21 STENG 2.5 NM to RW21 KUPRR 4 NM to RW21 MATTU 8800 CADNC KRSSE 11000									
210° 225° 7540* 8000* 8800 9700 GP 3.00° TCH 51									
1.2 NM 1.3 NM 1.5 NM 2.5 NM 3.2 NM 3.8 NM									
CATEGORY		A		B		C		D	
LNAV/ VNAV		DA		7019-1		330 (400-1)			
LNAV MDA		7120-1		431 (500-1)		7120-1¼		431 (500-1¼)	
CIRCLING		7160-1 471 (500-1)		7220-1 531 (600-1)		7540-2½ 851 (900-2½)		8140-3 1451 (1500-3)	

SW-1, 31 DEC 2020 to 28 JAN 2021

SW-1, 31 DEC 2020 to 28 JAN 2021