

WAAS CH 53710 W03A	APP CRS 027°	Rwy Idg 9201 TDZE 6643 Apt Elev 6689
--	------------------------	---

RNAV (GPS) RWY 3

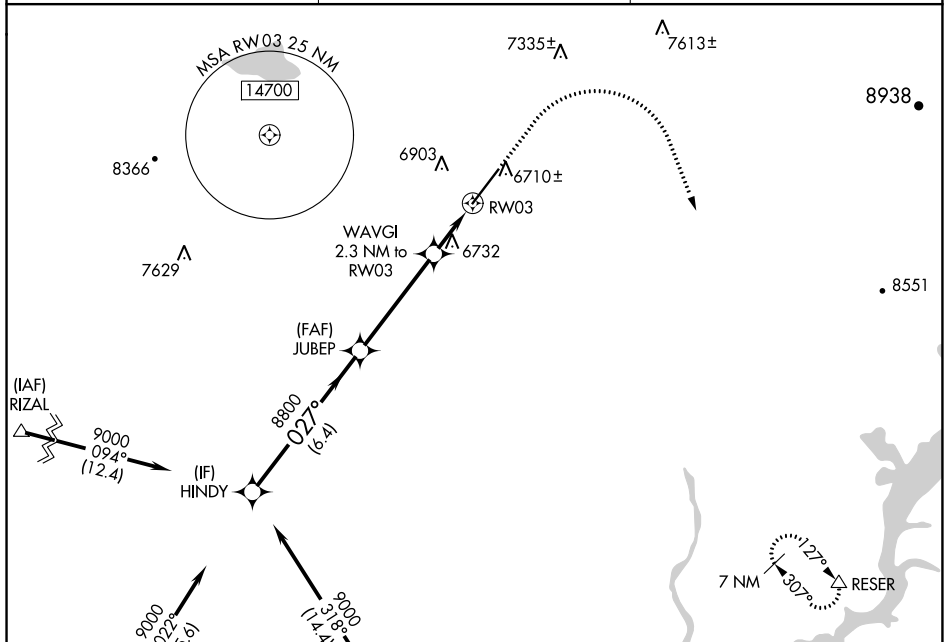
DURANGO-LA PLATA COUNTY (DRO)

T For uncompensated Baro-VNAV systems, LNAV/VNAV NA below -26°C (-14°F) or above 44°C (111°F). DME/DME RNP-0.3 NA.
A For inop MALSR, increase LNAV Cat C/D visibility to 1 mile.

MALSR
A5

MISSED APPROACH: Climb to 7500 then climbing right turn to 10200 direct RESER and hold.

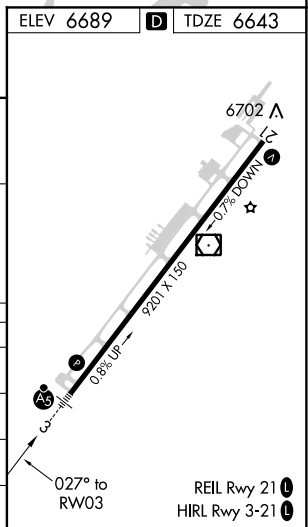
ASOS 120.625	DENVER CENTER 118.575 348.7	UNICOM 122.8 (CTAF) 0
------------------------	---------------------------------------	---------------------------------



(IAF) RATTLESNAKE RSK Procedure NA for arrivals on RSK VORTAC airway radials 316 CW 057. (IAF) TURLY

Diagram illustrating a flight profile for a Circling approach to RW03. The profile starts at 9000 ft, descends at 027° to 8800 ft at JUBEP, then continues to 7400 ft at WAGVI, and finally descends to 10200 ft at RW03. The distance from JUBEP to RW03 is 1.3 NM. The distance from WAGVI to RW03 is 1 NM. The distance from the start of the descent to JUBEP is 6.4 NM. The distance from JUBEP to WAGVI is 4.4 NM. The distance from WAGVI to RW03 is 1.3 NM. The distance from RW03 to the runway is 1 NM. The diagram also shows a vertical climb to 7500 ft and a turn to 10200 ft. The diagram is labeled with 'HINDY', 'JUBEP', 'WAGVI', 'RW03', and 'RESER'. The diagram is labeled with '9000', '8800', '7400', '7500', and '10200'. The diagram is labeled with '027°', '2.3 NM to RW03', '*1 NM to RW03', and '*LNAV only'. The diagram is labeled with 'GP 3.00° TCH 55', '6.4 NM', '4.4 NM', '1.3 NM', and '1 NM'. The diagram is labeled with 'CATEGORY', 'A', 'B', 'C', and 'D'. The diagram is labeled with 'LPV DA', 'INAV/VNAV DA', 'INAV MDA', and 'CIRCLING'. The diagram is labeled with '6843-1/2', '200 (200-1/2)', '6918-1/2', '275 (300-1/2)', '7000-1/2', '357 (400-1/2)', '7000-5/8', '357 (400-5/8)', '7160-1', '471 (500-1)', '7220-1', '531 (600-1)', '7540-2 1/2', '851 (900-2 1/2)', and '8140-3', '1451 (1500-3)'.

CATEGORY	A	B	C	D
LPV DA	6843-1/2		200 (200-1/2)	
INAV/VNAV DA	6918-1/2		275 (300-1/2)	
INAV MDA	7000-1/2 357 (400-1/2)		7000-5/8 357 (400-5/8)	
C CIRCLING	7160-1 471 (500-1)	7220-1 531 (600-1)	7540-2 1/2 851 (900-2 1/2)	8140-3 1451 (1500-3)



RNAV (GPS) RWY 3