

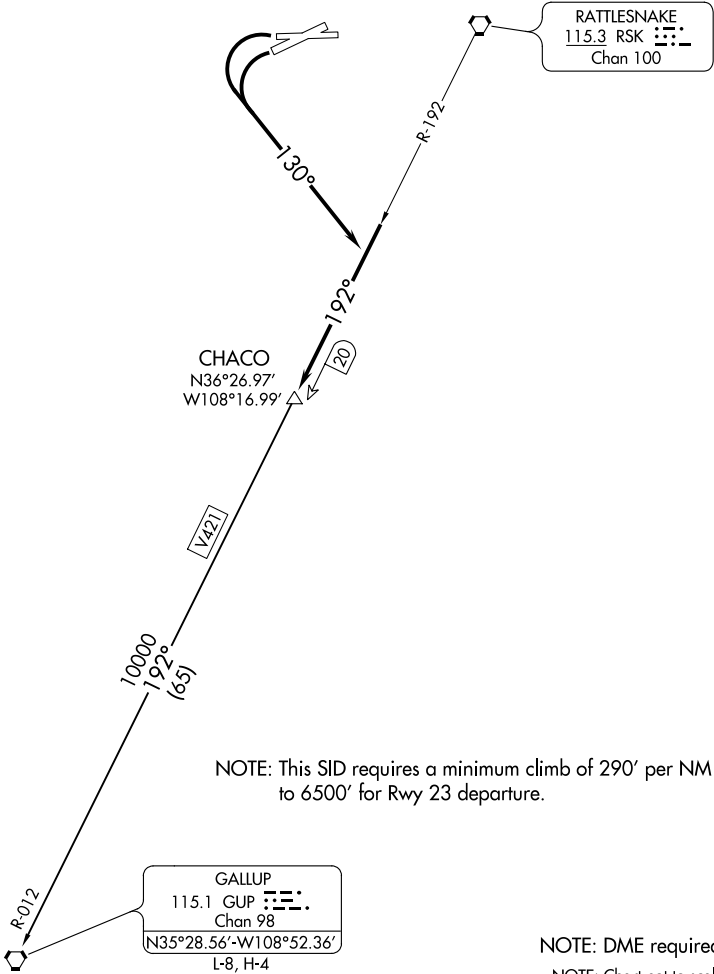
(CHACO1.CHACO) 17229

CHACO ONE DEPARTURE

AL-493 (FAA)

FOUR CORNERS RGNL (F'MN)  
FARMINGTON, NEW MEXICO

ATIS  
127.15  
GND CON  
121.7  
FARMINGTON TOWER  
118.9 (CTAF) 257.8  
DENVER CENTER  
118.575 348.7  
UNICOM  
122.95



DEPARTURE ROUTE DESCRIPTION

Aircraft departing Runways 23 or 25 turn left heading 130° to intercept RSK R-192 to CHACO. Thence via (assigned route).  
GALLUP TRANSITION (CHACO1.GUP): From over CHACO via RSK R-192 and GUP R-012 to GUP VORTAC.