

WAAS CH <b>97518</b> <b>W25A</b>	APP CRS <b>256°</b>	Rwy Idg TDZE Apt Elev	<b>6248</b> <b>5506</b> <b>5506</b>
--	------------------------	-----------------------------	---

RNAV (GPS) RWY 25

FOUR CORNERS RGNL (FMN)

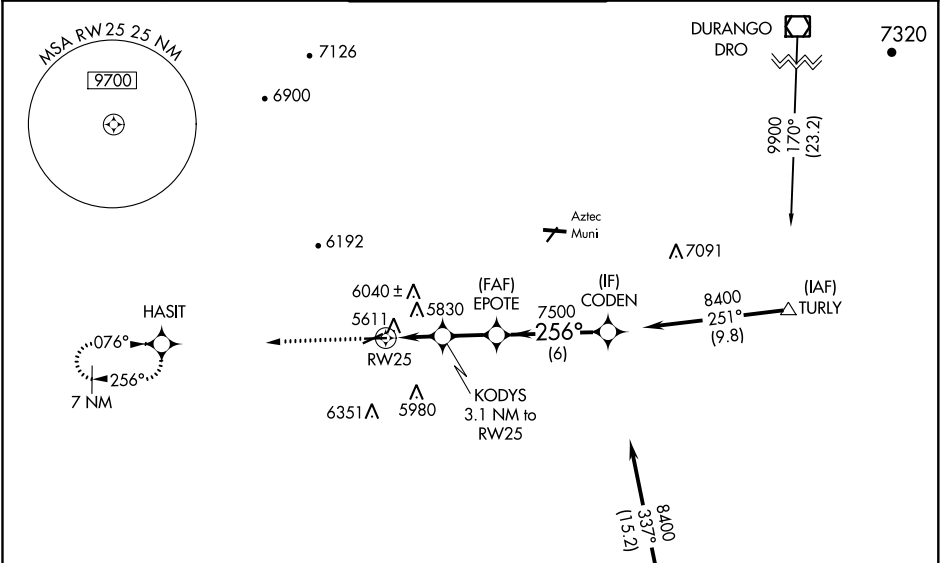
⚠

Baro-VNAV NA when using Durango-La Plata County, CO altimeter setting. For uncompensated Baro-VNAV systems, LNAV/VNAV NA below -26°C (-14°F) or above 38°C (100°F).  
DME/DME RNP 0.3 NA. Cat. D Circling NA SE of Rwy 5 and 25. When local altimeter setting not received, use Durango-La Plata County, CO altimeter setting and increase all DA 243 feet and all MDA 260 feet. Increase LPV visibility ¾ mile all Cats., LNAV/VNAV visibility 1 mile all Cats., LNAV and Circling visibility Cats. A-B ¼ mile, Cats. C-D visibility 1 mile. VDP NA with Durango-La Plata County, CO altimeter setting.

MISSED APPROACH:

Climb to 8000 direct HASIT and hold.

ATIS <b>127.15</b>	DENVER CENTER <b>118.575 348.7</b>	FARMINGTON TOWER * <b>118.9 (CTAF) 257.8</b>	GND CON <b>121.7</b>	UNICOM <b>122.95</b>
-----------------------	---------------------------------------	---	-------------------------	-------------------------



ELEV 5506	D	TDZE 5506
-----------	---	-----------

8000

HASIT

VGSI and RNAV glidepath not coincident (VGSI Angle 3.00/TCH 55).

\*LNAV only

RW25

KODYS 3.1 NM to RW25

EPOTE 7500

CODEN 8400

Procedure Turn NA

GP 3.00°

TCH 58

CATEGORY	A	B	C	D
LPV DA	5706-¾ 200 (200-¾)			
LNAV/VNAV DA	6068-2 562 (600-2)			
LNAV MDA	6160-1 654 (700-1)	6160-1¾ 654 (700-1¾)	6160-2 654 (700-2)	6160-2 654 (700-2)
CIRCLING	6160-1 654 (700-1)	6160-1¾ 654 (700-1¾)	6160-2 654 (700-2)	6160-2 654 (700-2)