

WAAS CH <b>86210</b> <b>W05A</b>	APP CRS <b>053°</b>	Rwy Idg TDZE <b>5498</b> Apt Elev <b>5506</b>
--	------------------------	---

RNAV (GPS) RWY 5

FOUR CORNERS RGNL (FMN)

⚠ Cat D Circling not authorized southeast of Rwy 5 and 25.

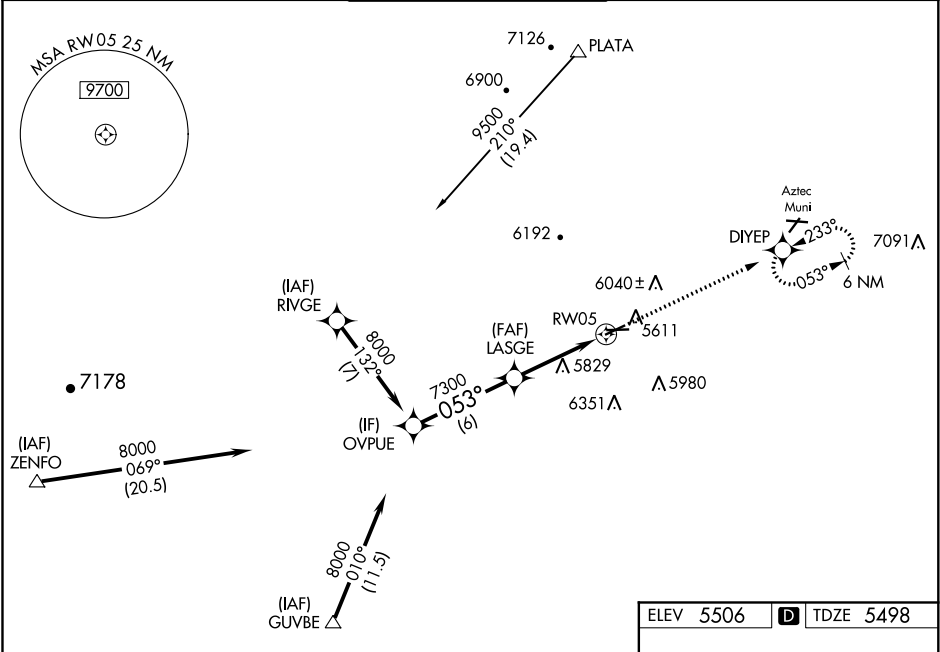
⚠ Baro-VNAV NA below -26°C (-14°F).

DME/DME RNP- 0.3 NA.

If local altimeter setting not received, use Durango-La Plata County, CO altimeter setting and increase all DAs/MDAs 260 feet.

MISSED APPROACH: Climb to 8400 direct DIYEP and hold.

ATIS <b>127.15</b>	DENVER CENTER <b>118.575 348.7</b>	FARMINGTON TOWER★ <b>118.9 (CTAF) 0 257.8</b>	GND CON <b>121.7</b>	UNICOM <b>122.95</b>
-----------------------	---------------------------------------	--	-------------------------	-------------------------



Procedure Turn NA

GP 3.00° TCH 55

8000

053°

7300

6 NM

3.7 NM

1.8 NM

RW05

8400

DIYEP

\*LNAV only

# VDP and Baro/VNAV NA when using Durango-La Plata County, CO altimeter setting.

VGSI and RNAV glidepath not coincident (VGSI Angle 3.00/TCH 61).

# \*1.8 NM to RW05

CATEGORY	A	B	C	D
LPV DA	5750-1 252 (300-1)			
LNAV/ VNAV DA	5920-1½ 422 (500-1½)			
LNAV MDA	6100-1 602 (600-1)	6100-1¾ 602 (600-1¾)	6100-2 602 (600-2)	
CIRCLING	6100-1½ 594 (600-1½)	6120-1½ 614 (700-1½)	6160-1¾ 654 (700-1¾)	6160-2 654 (700-2)

ELEV 5506 TDZE 5498

5570

5558

6704 X 100

TWR 5569

0.5% UP

0.4% UP

0.5% X 150

053° to RW05

SW-1, 31 DEC 2020 to 28 JAN 2021

SW-1, 31 DEC 2020 to 28 JAN 2021