

WAAS CH <b>90110</b> W07A	APP CRS <b>076°</b>	Rwy Idg TDZE <b>5502</b> Apt Elev <b>5506</b>
---------------------------------	------------------------	---

RNAV (GPS) RWY 7

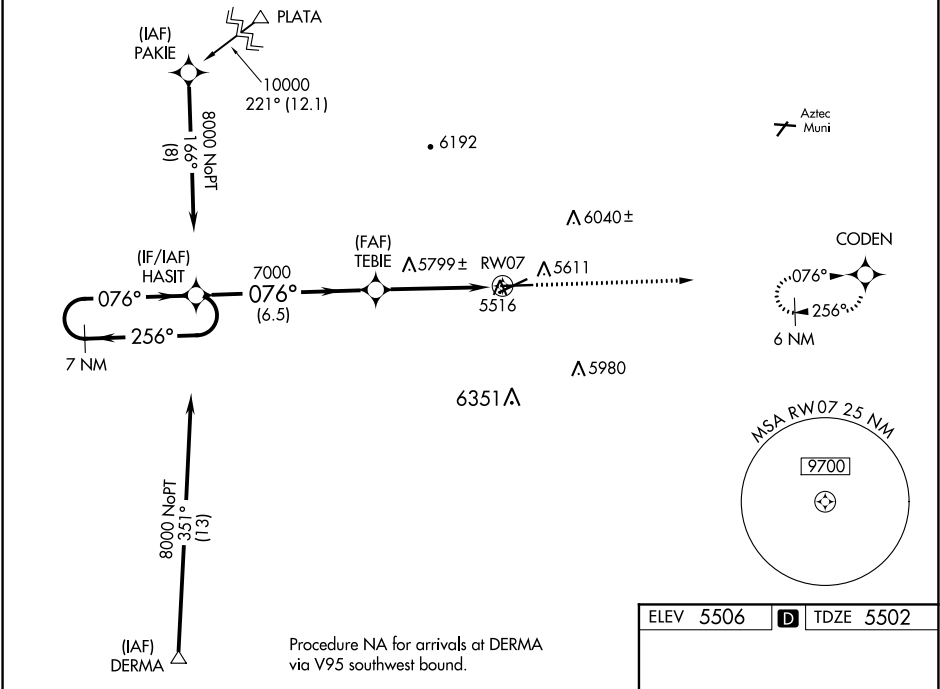
FOUR CORNERS RGNL (FMN)

⚠

Cat D Circling not authorized southeast of Rwys 5 and 25.  
Baro-VNAV NA below -26°C (-14°F). DME/DME RNP-0.3 NA.  
If local altimeter setting not received, use Durango-La Plata County, CO  
altimeter setting and increase all DAs/MDAs 260 feet.

MISSED APPROACH: Climb to  
8300 direct CODEN and hold.

ATIS <b>127.15</b>	DENVER CENTER <b>118.575 348.7</b>	FARMINGTON TOWER★ <b>118.9</b> (CTAF) <b>0 257.8</b>	GND CON <b>121.7</b>	UNICOM <b>122.95</b>
-----------------------	---------------------------------------	---	-------------------------	-------------------------



ELEV 5506	<b>D</b> TDZE 5502
-----------	--------------------

7 NM Holding Pattern				
HASIT				
GP 3.00° TCH 52				
7000				
TEBIE				
RW07				
6.5 NM 2.9 NM 1.7 NM				
CATEGORY	A	B	C	D
LPV DA	5760-1 258 (300-1)			
LNAV/VNAV DA	5980-1¾ 478 (500-1¾)			
LNAV MDA	6060-1	558 (600-1)	6060-1½ 558 (600-1½)	6060-1¾ 558 (600-1¾)
CIRCLING	6060-1¾ 554 (600-1¾)	6120-1¾ 614 (700-1¾)	6160-1¾ 654 (700-1¾)	6160-2 654 (700-2)

