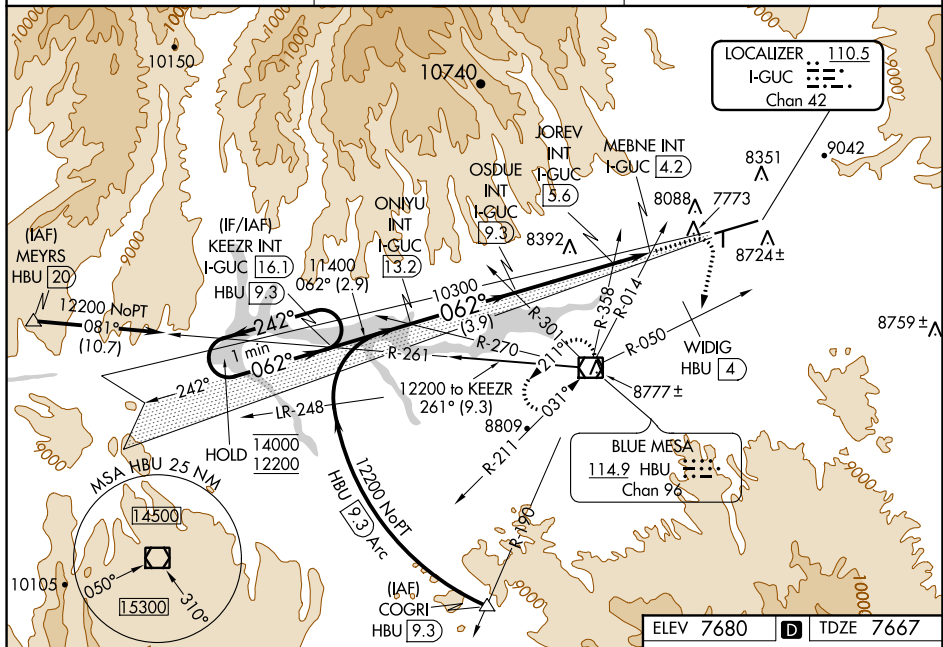
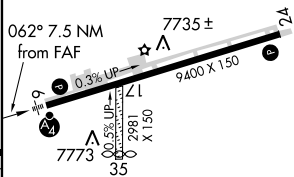
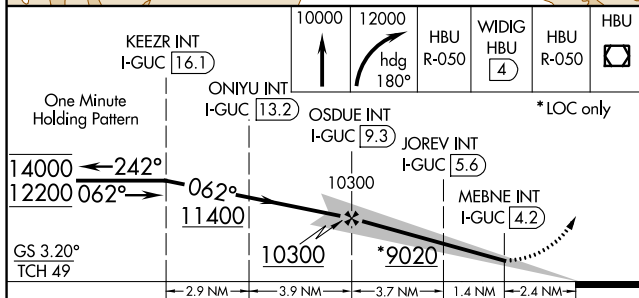


ILS or LOC RWY 6
GUNNISON-CRESTED BUTTE RGNL (GUC)

MISSED APPROACH: Climb to 10000 then climbing right turn to 12000 on heading 180° and HBU VOR/DME R-050 to WIDIG/HBU 4 DME continue on HBU VOR/DME R-050 to HBU VOR/DME and hold.

UNICOM
122.7 (CTAF) **L**

ELEV 7680	D	TDZE 7667
-----------	----------	-----------



HIRL Rwy 6-24
REIL Rwy 24

FAF to MAP 5.1 NM					
Knots	60	90	120	150	180
Min:Sec	5:06	3:24	2:33	2:02	1:42

SW-1, 31 DEC 2020 to 28 JAN 2021

SW-1, 31 DEC 2020 to 28 JAN 2021