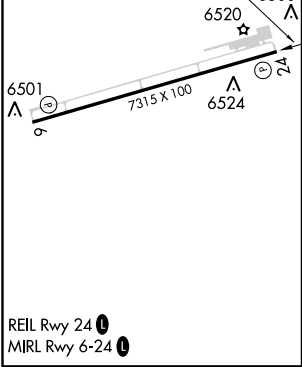
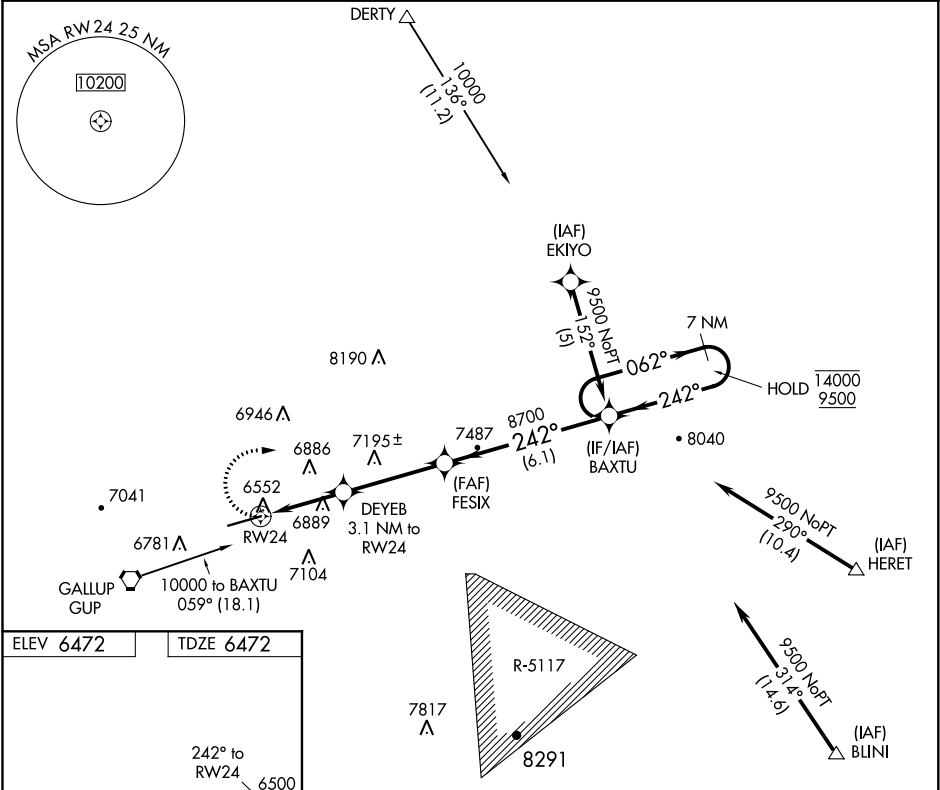


APP CRS	Rwy Idg	7315
242°	TDZE	6472
	Apt Elev	6472

RNAV (GPS) RWY 24  
GALLUP MUNI (GUP)

RNP APCH.	MISSED APPROACH: Climbing right turn to 9500 direct BAXTU and hold.
Rwy 24 helicopter visibility reduction below 3/4 SM NA.	

ASOS 118.375	ALBUQUERQUE CENTER 124.325 288.25	UNICOM 122.95 (CTAF)
-----------------	--------------------------------------	-------------------------



	9500	BAXTU	VGSI and descent angles not coincident (VGSI Angle 3.00/TCH 48).		7 NM	Holding Pattern
	DEYEB	3.1 NM to RW24		FESIX	BAXTU	
	7500	3.00° TCH 45		8700		
	3.1 NM	3.8 NM	6.1 NM			
CATEGORY	A	B	C	D		
LNAV MDA	7360-1 1/4	888 (900-1 1/4)	7360-2 1/2	888 (900-2 1/2)		
CIRCLING	7360-1 1/4	888 (900-1 1/4)	7360-2 3/4	888 (900-2 3/4)	7360-3	888 (900-3)

SW-1, 31 DEC 2020 to 28 JAN 2021

SW-1, 31 DEC 2020 to 28 JAN 2021