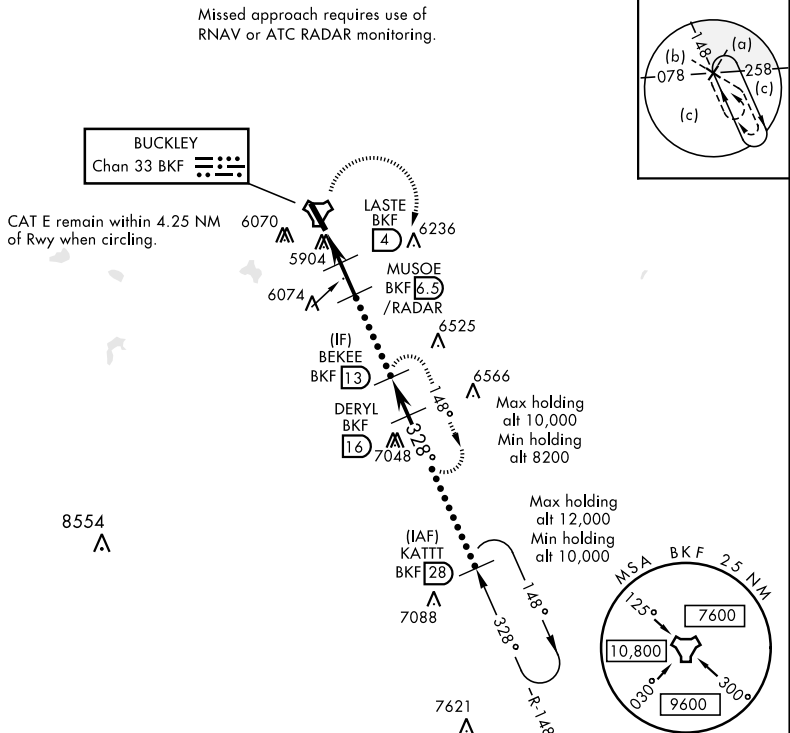


TACAN BKF Chan <b>33</b>	APCH CRS <b>328°</b>	Rwy ldg <b>11,006</b> TDZE <b>5663</b> Arpt Elev <b>5663</b>	JAL-538 [USAF]	BUCKLEY AFB (KBKF)
-----------------------------	-------------------------	--	----------------	--------------------

<b>▽</b> * When ALS inop, increase CAT CDE vis to 1½ miles. ** Circling NA East of Rwy 14-32.	ALSF-1 	MISSED APPROACH: Climbing right turn to 8200 and intercept BKF TACAN R-148 direct BEKEE and hold or as directed by ATC.	ATIS ★ <b>119.675 259.3</b>	DENVER APP CON <b>128.45 251.075</b>	BUCKLEY TOWER ★ <b>121.0 291.675</b>	GND CON <b>121.6 275.8</b>	CLNC DEL <b>121.6 275.8</b>
--	------------	---	--------------------------------	---	---	-------------------------------	--------------------------------

Missed approach requires use of RNAV or ATC RADAR monitoring.



EMERG SAFE ALT 100 NM 16,500

8200 BKF R-148	BEKEE BKF (13)	ELEV 5663	TDZE 5663
TACAN	CENAR (1.7)	LASTE (4)	MUSOE (6.5) /RADAR
BEKEE (13)	DERYL (16)	KATTI (28)	10,000
6600	7400	8000	8100
3.02°	TCH 45		
CATEGORY	C	D	E
S-32 *	6280-1½	617 (700-1½)	
CIRCLING **	6360-2 697 (700-2)	6400-2¼ 737 (800-2¼)	6420-2¾ 757 (800-2¾)