

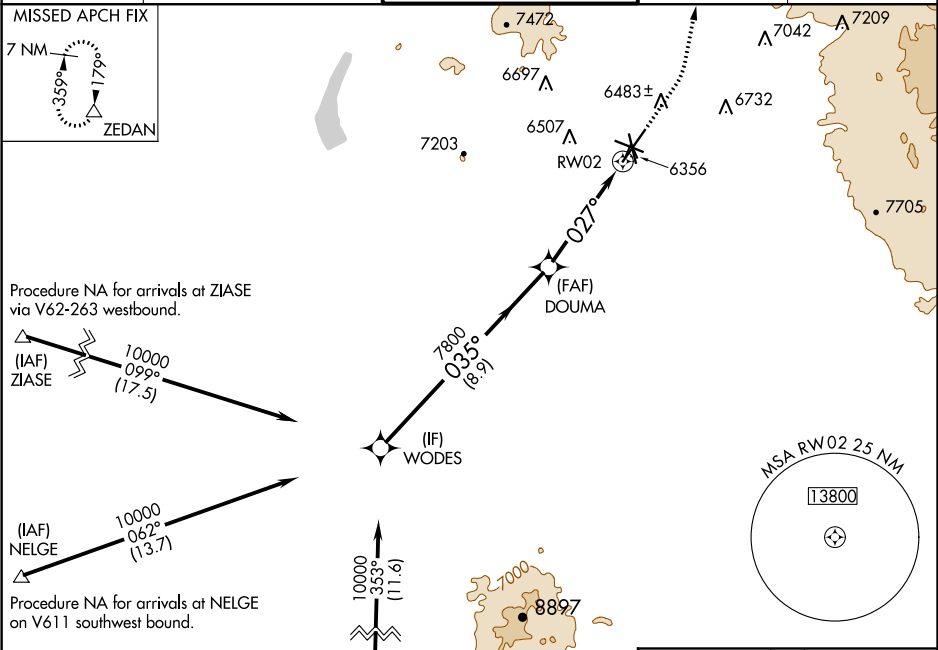
WAAS CH 63039 W02A	APP CRS 027°	Rwy Idg TDZE 6303 Apt Elev 6349
--	------------------------	---

RNAV (GPS) RWY 2
SANTA FE MUNI (SAF')

⚠ For uncompensated Baro-VNAV systems, LNAV/VNAV NA below -18°C (0°F) or above 45°C (113°F). DME/DME RNP-0.3 NA.

MISSED APPROACH: Climb to 7300 then climbing left turn to 11000 direct ZEDAN and hold.

ATIS 128.55	ALBUQUERQUE CENTER 132.8 346.35	SANTA FE TOWER ★ 119.5 (CTAF) 239.3	GND CON 121.7	UNICOM 122.95
-----------------------	---	---	-------------------------	-------------------------



ELEV 6349 **D** TDZE 6303

REIL Rwy 10, 15, 20 and 33
MIRL Rwy 2-20 and 15-33 **⬤**
MIRL Rwy 10-28

WODES VGSi and RNAV glidepath not coincident (VGSi Angle 3.00/TCH 69°).

DOUMA 7800

RW02

GP 3.00° TCH 53

8.9 NM 3.4 NM 1.2 NM

7300 11000 ZEDAN

*LNAV only

*1.2 NM to RW02

CATEGORY	A	B	C	D
LPV DA	6503-¾ 200 (200-¾)			
LNAV/VNAV DA	6553-⅞ 250 (300-⅞)			
LNAV MDA	6740-1	437 (400-1)	6740-1¼	437 (400-1¼)
C CIRCLING	6800-1 451 (500-1)	6920-1 571 (600-1)	7340-3 991 (1000-3)	7660-3 1311 (1400-3)

TWR ★ 6387

0.3% UP 0.3% UP 0.3% UP 0.3% DOWN

027° to RW02

SW-1, 31 DEC 2020 to 28 JAN 2021

SW-1, 31 DEC 2020 to 28 JAN 2021