

ZIAS4 FOUR DEPARTURE

AL-548 (FAA)

SANTA FE MUNI (SAF)  
SANTA FE, NEW MEXICO

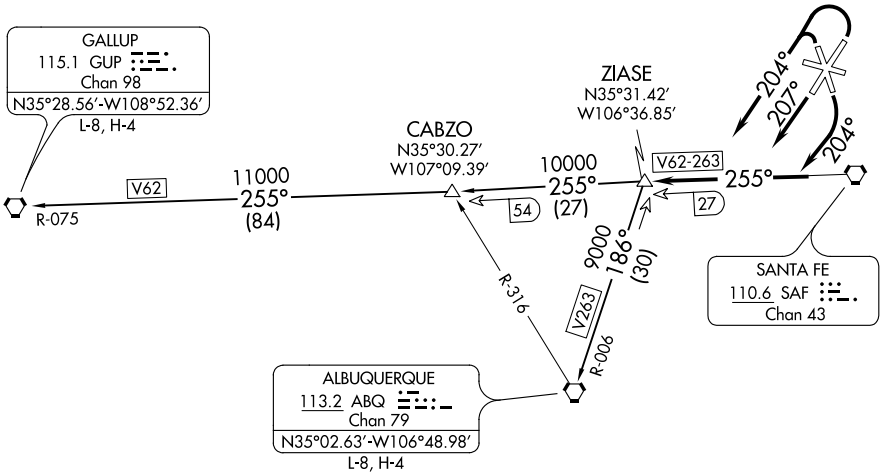
ATIS 128.55  
GND CON  
121.7  
SANTA FE TOWER★  
119.5 (CTAF) 239.3  
ALBUQUERQUE CENTER  
132.8 346.35

CAUTION: Mountainous terrain all quadrants.

TOP ALTITUDE:  
ASSIGNED BY ATC

TAKEOFF MINIMUMS

Rwy 2: Standard with minimum climb of 235' per NM to 8200.  
Rwy 33: Standard with minimum climb of 310' per NM to 8200.



NOTE: Chart not to scale.

DEPARTURE ROUTE DESCRIPTION

TAKEOFF RUNWAYS 2, 33: Climbing left turn heading 204° thence. . . .  
TAKEOFF RUNWAY 15: Climbing right turn heading 204° thence. . . .  
TAKEOFF RUNWAY 20: Climb heading 207° thence. . . .  
. . . . intercept and proceed on SAF R-255 to ZIAS4 INT, then on (transition) or  
(assigned route).

ALBUQUERQUE TRANSITION (ZIAS4.ABQ): From over ZIAS4 INT on ABQ R-006  
to ABQ VORTAC.

GALLUP TRANSITION (ZIAS4.GUP): From over ZIAS4 INT on SAF R-255 and  
GUP R-075 to GUP VORTAC.