

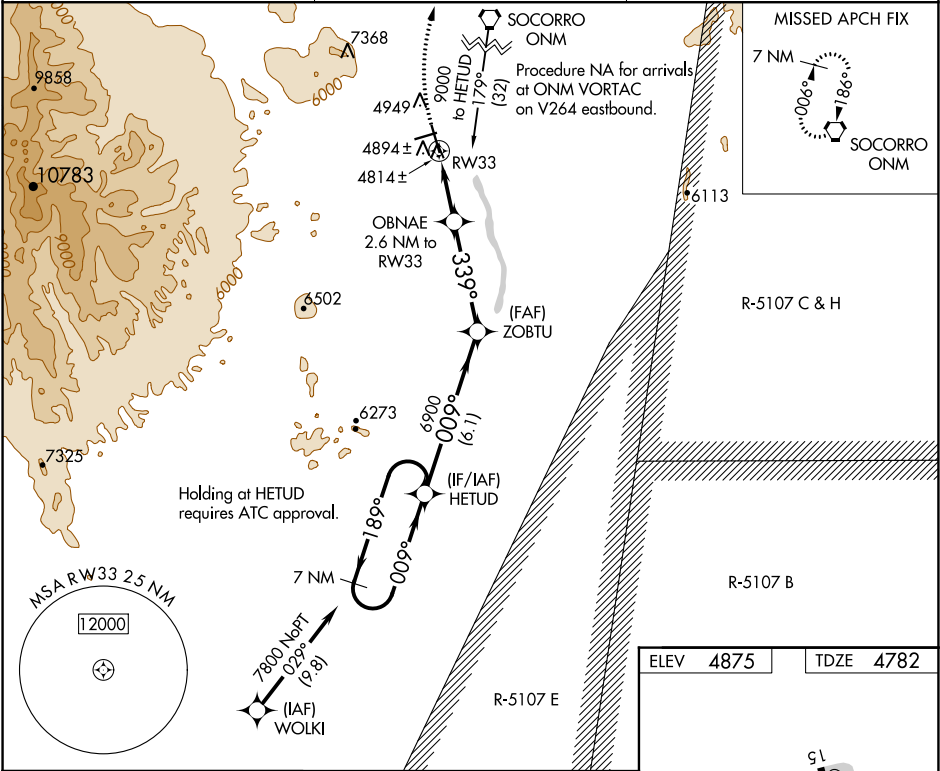
WAAS CH 65927 W33A	APP CRS 339°	Rwy Idg TDZE 4782 Apt Elev 4875
--	------------------------	---


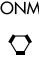

RNAV (GPS) RWY 33
SOCORRO MUNI (ONM)

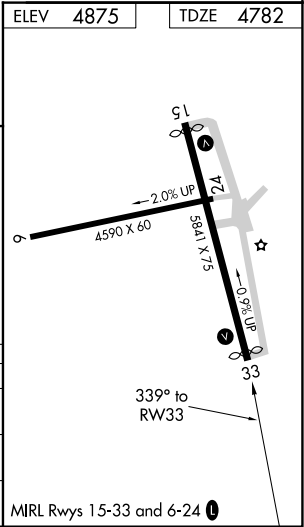
▼ When VGSI inop, Circling Rwy 15 NA at night. When VGSI inop, Straight-in/Circling Rwy 33 procedure NA at night. DME/DME RNP-0.3 NA. Visibility reduction by helicopters NA. Circling NA west of Rwy 15-33. When local altimeter setting not received, procedure NA.

MISSED APPROACH: Climbing right turn to 8000 direct ONM VORTAC and hold.

AWOS-3 118.325	ALBUQUERQUE CENTER 124.325 288.25	UNICOM 122.8 (CTAF) 0
--------------------------	---	---------------------------------



8000	ONM	VGSI and descent angles not coincident (VGSI Angle 4.00/TCH 26).			7 NM Holding Pattern		
					HETUD		
		OBNAE 2.6 NM to RW33	$\leq 3.00^\circ$ TCH 50	ZOBUTU	189°→ ←009° 7800		
		RW33	339°	6900	009°		
		2.6 NM	4 NM	6.1 NM			
CATEGORY	A		B		C		D
LP MDA	5080-1		298 (300-1)				NA
LNAV MDA	5160-1		378 (300-1)		5160-1½ 378 (300-1½)		NA
CIRCLING	5320-1 445 (500-1)		5340-1 465 (500-1)		5340-1½ 465 (500-1½)		NA



SW-1, 31 DEC 2020 to 28 JAN 2021

SW-1, 31 DEC 2020 to 28 JAN 2021