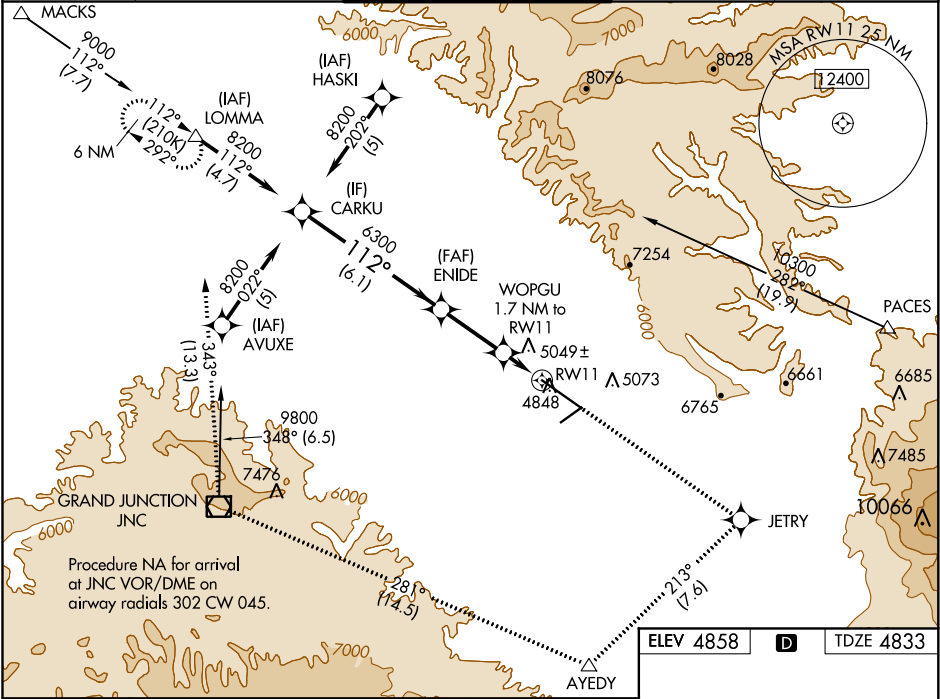


WAAS CH <b>97514</b> <b>W11A</b>	APP CRS <b>112°</b>	Rwy Idg TDZE <b>4833</b> Apt Elev <b>4858</b>
--	------------------------	---

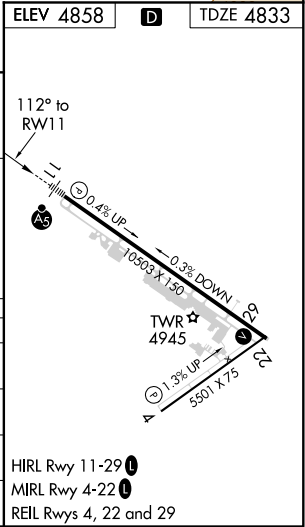
RNAV (GPS) Y RWY 11  
GRAND JUNCTION RGNL (GJT)

RNP APCH. ▼ For uncompensated Baro-VNAV systems, LNAV/VNAV NA below -24°C (-11°F) or above 39°C (102°F). ▲ When local altimeter setting not received, procedure NA. #RVR 1800 authorized with use of FD or AP or HUD to DA.	MALSR AS	MISSED APPROACH: Climb to 6700 direct JETRY then climbing right turn to 9000 on track 213° to AYEDY and on track 281° to JNC VOR/DME and on track 343° to LOMMA and hold.
--	-------------	---

ATIS <b>118.55</b>	DENVER APP CON ★ <b>119.7 317.4</b>	GRAND JUNCTION TOWER ★ <b>118.1 (CTAF) 0 257.8</b>	GND CON <b>121.7 257.8</b>	UNICOM <b>122.95</b>
-----------------------	--	---	-------------------------------	-------------------------



	6700	JETRY	9000	AYEDY	JNC	LOMMA
	↑	✱	↻	△	tr 281°	tr 343°
CARKU	8200	ENIDE	WOPGU			
	GP 3.00° TCH 50	6300	1.7 NM to RW11			
	VGSI and RNAV glidepath not coincident (VGSI Angle 3.00/TCH 51).	*5400				
	6.1 NM	2.7 NM	1.7 NM			
CATEGORY	A	B	C	D		
LPV DA#	5033/24 200 (200-½)					
LNAV/VNAV DA	5492-1¾ 659 (700-1¾)					
LNAV MDA	5300/24 467 (500-½)		5300/50 467 (500-1)			
CIRCLING	5360-1 502 (600-1)	5420-1 562 (600-1)	5440-1½ 582 (600-1½)	5540-2¼ 682 (700-2¼)		



SW-1, 31 DEC 2020 to 28 JAN 2021

SW-1, 31 DEC 2020 to 28 JAN 2021