

LOC I-MTJ

111.3

APP CRS

168°

Rwy Idg

10000

TDZE

5708

Apt Elev

5759

ILS or LOC RWY 17

MONTROSE RGNL (MTJ)

From DIRDY, MYERS, GEJYU: RNAV 1-GPS required. DME required.

NA

Circling NA east of Rwy 17 and northeast of Rwy 31. Circling Rwy 31 NA at night. When Circling to Rwy 13 at night, operational VGSI required, remain on or above VGSI glidepath until threshold. DME from MTJ VOR/DME. Simultaneous reception of I-MTJ and MTJ DME required. For inop ALS, increase S-LOC 17 Cat C/D visibility to  $\frac{1}{8}$  SM.

MALSR

MISSED APPROACH:

Climb to 6300 then climbing right turn to 11000 on heading 325° and MTJ VOR/DME R-297 to PAGRE/MTJ 14.8 DME and hold, continue climb-in-hold to 11000.

ASOS

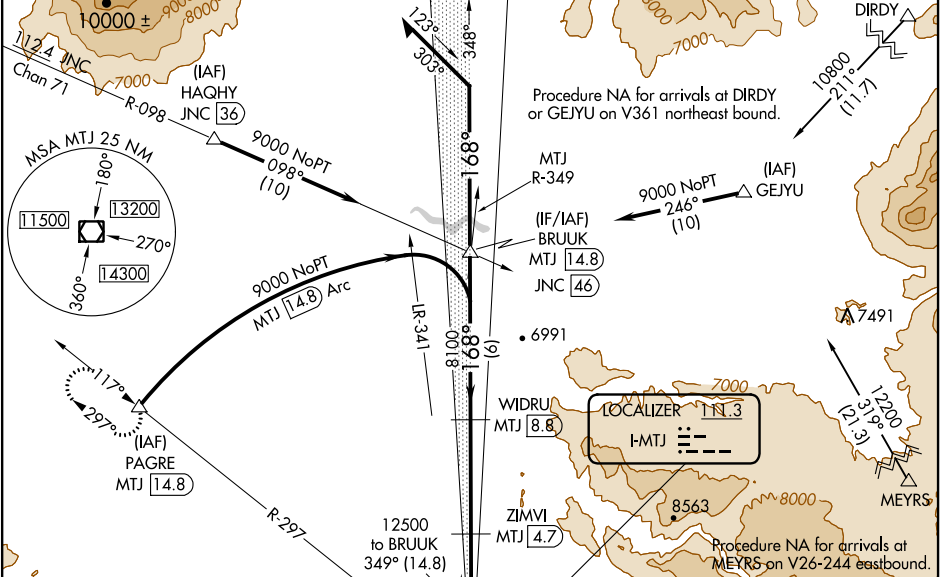
135.225

DENVER CENTER

127.1 343.65

UNICOM

122.8 (CTAF)



ELEV 5759

TDZE 5708

168° 7.4 NM from FAF

0.5% UP

0.3% DOWN

0.9% UP

Remain within 10 NM

BRUUK MTJ 14.8

WIDRU MTJ 8.8

ZIMVI MTJ 4.7

MTJ 1.4

12500

9000

8100

6800

GS 3.00°

TCH 56

6 NM

4.1 NM

3.3 NM

CATEGORY	A	B	C	D
S-ILS 17		5908- $\frac{1}{2}$	200 (200- $\frac{1}{2}$ )	
S-LOC 17		6020- $\frac{1}{2}$	312 (300- $\frac{1}{2}$ )	
CIRCLING	6280-1 521 (600-1)	6320-1 561 (600-1)	6380-1 $\frac{3}{4}$ 621 (700-1 $\frac{3}{4}$ )	6800-3 1041 (1100-3)

REIL Rws 13, 31, and 35

HIRL Rws 13-31 and 17-35