

LOC/DME I-SVC 111.7 Chan 54	APP CRS 258°	Rwy Idg 6802 TDZE 5380 Apt Elev 5446
---	------------------------	---

LOC RWY 26
GRANT COUNTY (SVC)

DME required.

▼	Circling to Rwy 3, 12, 17, 21, 30, 35 NA at night.
▲ NA	When local altimeter setting not received, procedure NA. For inop ALS, increase S-26 Cat C/D visibility to 1 3/8 SM.

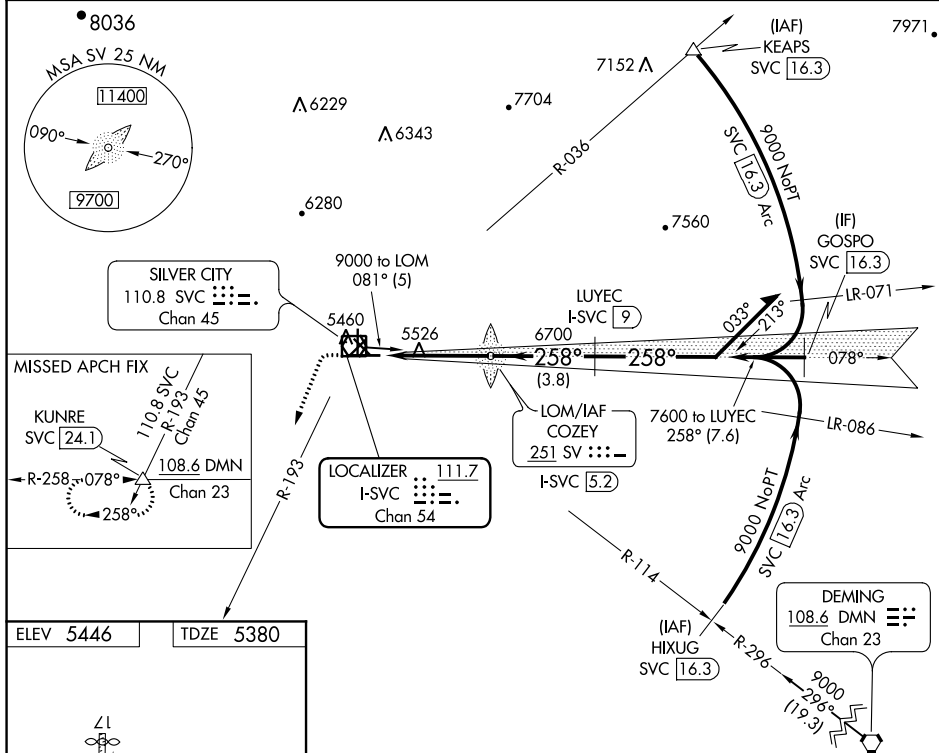
MALS



MISSED APPROACH: Climb to 5800, then climbing left turn to 10000 on heading 190° and SVC VOR/DME R-193 to KUNRE INT/ SVC VOR/DME 24.1 DME and hold.

AWOS-3
126.725

ALBUQUERQUE CENTER
134.45 327.15

UNICOM
122.8 (CTAF) **L**

5800 ↑	10000 hdg 190°	SVC R-193	KUNRE △	SV LOM COZEY I-SVC 5.2	VGSI and descent angles not coincident (VGSI Angle 3.00/TCH 45).	
Use I-SVC DME when on the localizer course.				078°	Remain within 11 NM	
				I-SVC 1.2	I-SVC 2.5	I-SVC 9
				258°	7600	8800
				1.3	2.8 NM	3.8 NM
CATEGORY	A		B		C	D
S-26	5840-3/4		460 (400-3/4)		5840-1 460 (400-1)	5840-1 1/4 460 (400-1 1/4)
CIRCLING	5920-1 474 (500-1)		5940-1 494 (500-1)		5960-1 5/8 514 (600-1 5/8)	6020-2 574 (600-2)