

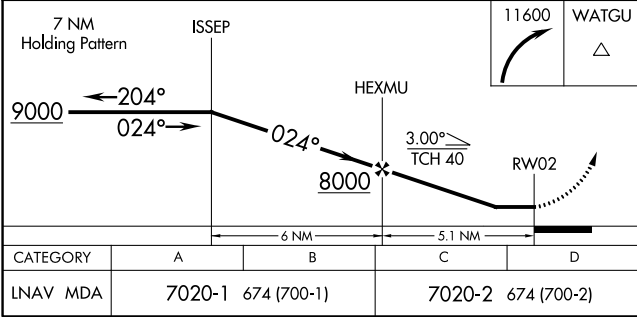
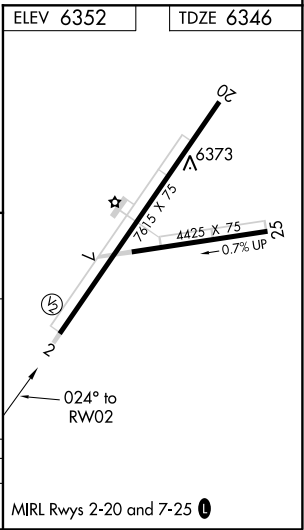
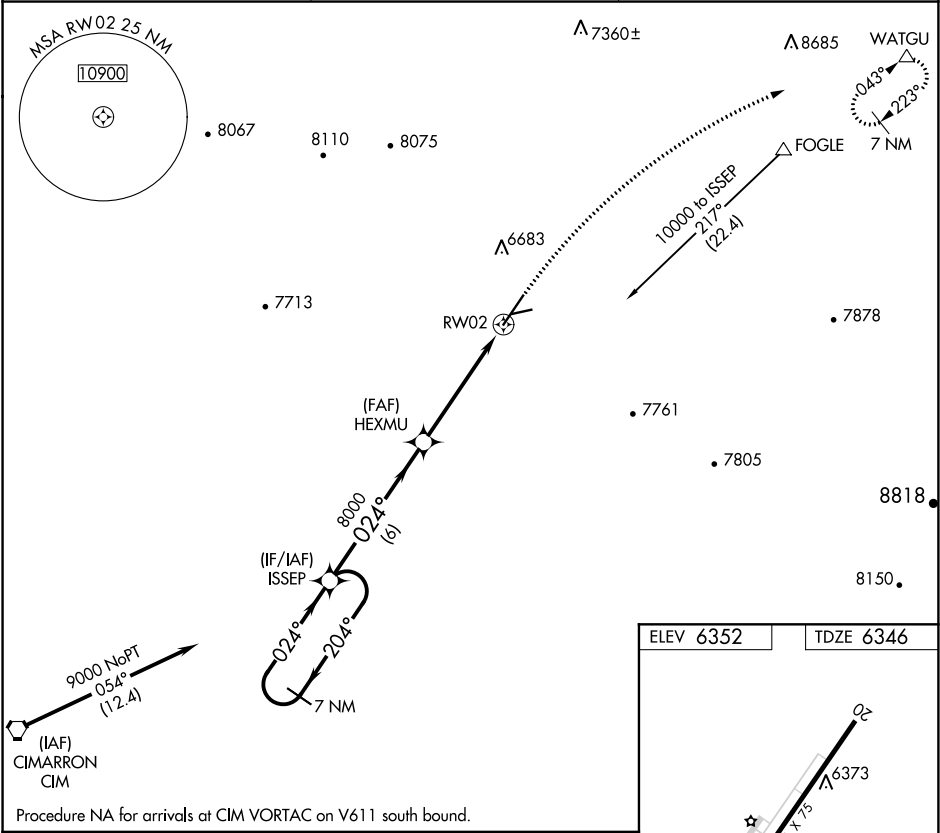
APP CRS	Rwy Idg	7615
024°	TDZE	6346
	Apt Elev	6352

RNAV (GPS) RWY 2

RATON MUNI/CREWS FIELD (RTN)

RNP APCH.	MISSED APPROACH: Climbing right turn to 11600 direct WATGU and hold, continue climb-in-hold to 11600.
▼ Procedure NA at night. Rwy 2 helicopter visibility reduction below 1 SM NA.	

ASOS 118.375	ALBUQUERQUE CENTER 132.8 346.35	UNICOM 122.8 (CTAF) 0*
-----------------	------------------------------------	---------------------------



SW-1, 31 DEC 2020 to 28 JAN 2021

SW-1, 31 DEC 2020 to 28 JAN 2021