

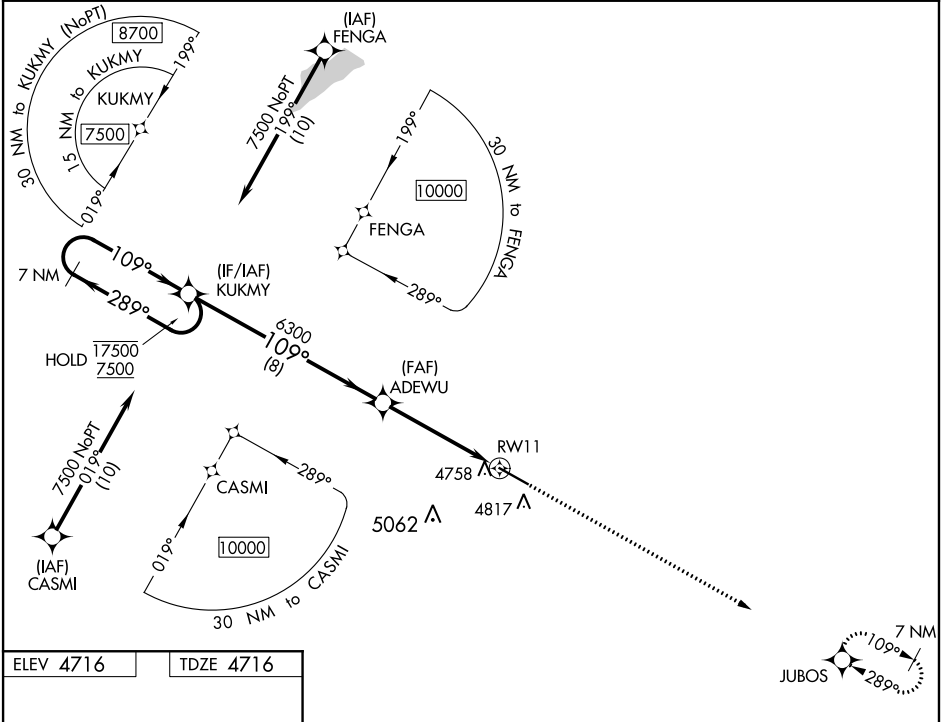
WAAS CH 82340 W11A	APP CRS 109°	Rwy Idg TDZE 4716 Apt Elev 4716
--	------------------------	---

RNAV (GPS) RWY 11

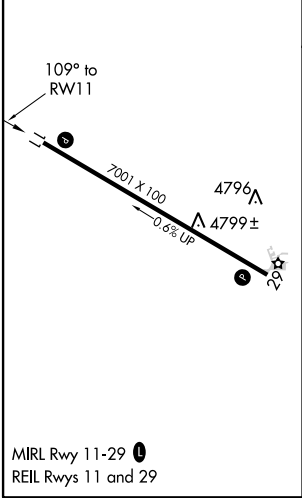
COLORADO PLAINS RGNL (AKO)

RNP APCH	MISSED APPROACH: Climb to 7500 direct JUBOS and hold.
▼ Rwy 11 helicopter visibility reduction below ¾ SM NA. ▲ For uncompensated Baro-VNAV systems, LNAV/VNAV NA below -22°C or above 54°C.	

ASOS 135.475	DENVER CENTER 133.95 317.55	UNICOM 122.8 (CTAF) 0
------------------------	---------------------------------------	---------------------------------



ELEV 4716	TDZE 4716
-----------	-----------



7 NM Holding Pattern		VGSI and RNAV glidepath not coincident (VGSI Angle 3.00/TCH 44).		7500	JUBOS
<div><div>17500</div><div>7500</div></div> <div>289° 109°</div>		KUKMY	ADEWU 6300	<div>7500</div> <div>↑</div>	<div>JUBOS</div> <div>✦</div>
GP 3.00° TCH 54		6300		*LNAV only	
		8 NM		*0.8 NM to RW11	
		4 NM		RW11	
		0.8			
CATEGORY	A	B	C	D	
LPV DA	4966-1 250 (300-1)				
LNAV/VNAV DA	4966-1 250 (300-1)				
LNAV MDA	5020-1 304 (400-1)				
CIRCLING	5140-1 424 (500-1)	5260-1 544 (600-1)	5420-2 704 (800-2)	5420-2¼ 704 (800-2¼)	